

Produto	Pag	Fig	Produto	Pag	Fig	Produto	Pag	Fig
<b>SPRINTER</b>			JUNTA MOTOR	8	16			
<b>MERCEDES</b>			JUNTA TAMPA VALVULA	9	3			
ATUADOR EMBREAGEM	2	2	LANTERNA ESPELHO RETROVISOR	9	4			
BARRA DIRECAO	2	3	LANTERNA PLACA	9	6			
BATENTE SUSPENSAO	2	4	LANTERNA SETA	9	7			
BOMBA COMBUSTIVEL	2	7	LANTERNA TRASEIRA	9	14			
BOMBA D'AGUA	2	8	LENTE LANTERNA	10	5			
BOMBA DIRECAO HIDRAULICA	2	11	LUVA CARDAN	10	6			
BORRACHA ROLAMENTO CARDAN	2	15	MACANETA PORTA	10	7			
BRACO LIMPADOR PARABRISA	2	16	MANGUEIRA BOMBA VACUO AO CARTER	10	11			
BUCHA BARRA ESTABILIZADORA	3	3	MANGUEIRA INTERCOOLER	10	12			
CABECOTE FILTRO COMBUSTIVEL	3	5	MANGUEIRA RADIADOR	10	16			
CABO ACIONAMENTO MACANETA	3	6	MAQUINA VIDRO PORTA	11	2			
CABO CAPO	3	7	MOLAS	11	6			
CABO FREIO MAO	3	8	PAINEL FRONTAL	11	7			
CAIXA DIRECAO	3	9	PALHETA LIMPADOR PARABRISA	11	9			
CALCO BORRACHA FEIXE MOLA	3	11	PARACHOQUE DIANTEIRO	11	11			
CALOTA RODA	3	14	PARACHOQUE TRASEIRO	11	15			
CAPO MOTOR	3	15	PARAFUSO TERMINAL CARDAN	12	3			
CARDAN COMPLETO	4	3	PARALAMA DIANTEIRO	12	4			
CARRINHO PORTA	4	4	PASTILHA FREIO (JG)	12	10			
CHAVE SETA	4	7	PIVO DIRECAO	12	15			
CILINDRO ACIONAMENTO	4	8	POLIA ALTERNADOR	12	16			
CILINDRO EMBREAGEM	4	9	POLIA TENSORA CORREIA	13	2			
CILINDRO FREIO	4	12	PONTEIRA CARDAN (INTERMEDIARIA)	13	8			
COBERTURA ESPELHO	4	13	QUADRO RADIADOR	13	9			
COBERTURA LANTERNA	4	15	RADIADOR D'AGUA	13	10			
CORREIA AUTOMOTIVA	5	4	RADIADOR OLEO MOTOR	13	11			
COXIM AMORTECEDOR	5	6	REPARO PINCA FREIO	13	12			
CRUZETA CARDAN	5	8	RESERVATORIO OLEO	13	14			
DISCO FREIO	5	9	ROLAMENTO CARDAN C/BORRACHA	13	15			
ESPELHO RETROVISOR	5	14	SAIA RADIADOR	13	16			
ESTRIBO PARACHOQUE	6	5	SAPATA FREIO	14	2			
FAROL AUXILIAR	6	6	SENSOR PASTILHA FREIO	14	3			
FAROL PRINCIPAL	6	8	SENSOR VELOCIMETRO	14	4			
FECHADURA PORTA	6	16	SILENCIOSO ESCAPAMENTO	14	6			
FLANGE CAMBIO	7	7	SUPORTE CARDAN COMPLETO	14	7			
FLANGE CARDAN (DE ORELHA)	7	8	SUPORTE CARDAN COMPLETO C/REGULAG.	14	13			
FLANGE DIFERENCIAL	7	9	TENSOR CORREIA ALTERNADOR	14	15			
FLEXIVEL BOMBA VACUO	7	10	TERMINAL CAMBIO	15	4			
FLEXIVEL TURBINA	7	11	TERMINAL DIFERENCIAL	15	5			
FRISO GRADE FRONTAL	7	13	TERMINAL DIRECAO	15	6			
GARFO CARDAN (DE SOLDAR)	7	15	VALVULA ANTI CHAMA	15	7			
GARFO EMBREAGEM	7	16	VALVULA PNEUMATICA	15	8			
GRADE FRONTAL	8	2	VELA AQUECEDORA	15	9			
GUARDA-PO CAIXA DIRECAO	8	6	VIDRO ESPELHO	15	10			
HELICE RADIADOR MOTOR	8	7	VOLANTE DIRECAO	15	14			
INTERRUPTOR ACIONAMENTO VIDRO	8	10						
JUNTA CABECOTE MOTOR	8	13						
JUNTA CARTER	8	14						
JUNTA COLETOR ESCAPAMENTO	8	15						

## REFERÊNCIA



## PRODUTOS EM ORDEM

MERCEDES



09

20-194

**BOMBA D'AGUA**

Aplic. = SPRINTER 311 CDI (2008...)



Cod.Orig. = 611.200.1101 / 611.200.1601

Obs/Med. = ORIGINAL (MOTOR OM611 TURBO INTERCOOLER)

Similar = URBA (UB0376) / INDISA (404001)

Mtg. =

10

20-439

**BOMBA D'AGUA**

Aplic. = SPRINTER 415/ 515 (2013...)



Cod.Orig. = 651.200.2301

Obs/Med. = COMPLETA

Similar =

Mtg. =

11

46-010

**BOMBA DIRECAO HIDRAULICA**

Aplic. = SPRINTER 310/ 312/ 412 MOTOR MAXION



Cod.Orig. = 003.466.1001 / 003.466.5001

Obs/Med. = ROTACAO ESQUERDA - LINHA LEVE

Similar = ZF (7691.955.910) / DHB (18303) (1003005) / AMPRI (95103)

Mtg. =

12

46-090

**BOMBA DIRECAO HIDRAULICA**

Aplic. = SPRINTER CDI



Cod.Orig. = 002.466.7501 / 002.466.7601

Obs/Med. = C/RESERVATORIO

Similar = ZF (7692.900.510) / DHB (27587) / AMPRI (95107)

Mtg. =

13

46-294

**BOMBA DIRECAO HIDRAULICA**

Aplic. = SPRINTER EURO II 2.8 LITROS C/MOTOR MWM



Cod.Orig. = 7002656C1

Obs/Med. = ROTACAO ESQUERDA (120 BAR) - LINHA LEVE

Similar = DHB (26263) / AMPRI (97018)

Mtg. =

14

46-400

**BOMBA DIRECAO HIDRAULICA**

Aplic. = SPRINTER CDI 313/ 415/ 515 (EURO 5 MOTOR OM651)



Cod.Orig. = 906.466.0201

Obs/Med. = 120 BAR

Similar = ZF (7692.900.910) / AMPRI (95118)

Mtg. =

15

41-228

**BORRACHA ROLAMENTO CARDAN**

Aplic. = 914C/ 712C/ 1214K/ 1214C/ SPRINTER 310D/ FURGÃO/ PICK-UP/ VAN STD



Cod.Orig. =

Obs/Med. = Ø 40 MM APLIC. CAVALETE Ø 45 MM

Similar =

Mtg. = CAVALETE (41-102) / CINTA (41-104)

16

82-032

**BRACO LIMPADOR PARABRISA**

Aplic. = SPRINTER 310/ 311/ 312/ 313



Cod.Orig. = 901.820.0044

Obs/Med. = ESQ.

Similar =

Mtg. =

02

25-094

**ATUADOR EMBREAGEM**

Aplic. = SPRINTER CDI 311/ 313/ 413/ 415/ 515



Cod.Orig. = 000.254.2508

Obs/Med. =

Similar = LUK (510003510) / SKF (VKCH4844) / SACHS (3342)

Mtg. =

03

46-097

**BARRA DIRECAO**

Aplic. = SPRINTER 310/ 312/ (1997/2001)



Cod.Orig. = 901.460.0205

Obs/Med. = EIXO AXIAL CAIXA

Similar = TRW (BLS4344)

Mtg. =

04

32-240

**BATENTE SUSPENSÃO**

Aplic. = SPRINTER 310/ 312/ 412



Cod.Orig. = 901.322.0019

Obs/Med. = SUPERIOR MOLA DIANT. CENTRAL 32MM

Similar =

Mtg. =

05

32-241

**BATENTE SUSPENSÃO**

Aplic. = SPRINTER 310/ 312/ 412



Cod.Orig. = 901.322.1119

Obs/Med. = DIR. INFERIOR MOLA DIANT. 35MM

Similar =

Mtg. =

06

32-284

**BATENTE SUSPENSÃO**

Aplic. = SPRINTER 310/ 312/ 412



Cod.Orig. = 901.322.0419

Obs/Med. = ESQ. INFERIOR MOLA DIANT. 30MM

Similar =

Mtg. =

07

07-144

**BOMBA COMBUSTIVEL**

Aplic. = SPRINTER 311/ 313/ 415/ 515/ CDI



Cod.Orig. = 6110900350

Obs/Med. = MOTOR OM611

Similar = SCHADEK (40030)

Mtg. =

LACTO: 08/2018

08

20-062

**BOMBA D'AGUA**

Aplic. = SPRINTER 312/ 310/ 412



Cod.Orig. = 000.200.0101 / 000.200.1501

Obs/Med. = MOTOR MAXION HS 4 CIL

Similar = SCHADEK (20069) (90000302) / URBA (UB0340) / INDISA (404000)

Mtg. =

## REFERÊNCIA



## PRODUTOS EM ORDEM

MERCEDES



09

**46-511**

**CAIXA DIRECAO**

Aplic. = SPRINTER 310/ 312/ CDI 311 (...2012)



Cod.Orig. = 901.460.4100 / 901.460.4500

Obs/Med. = C/ AXIAL (HIDRAULICA)  
Similar = AMPRI (25100)  
Mtg. =

10

**46-560**

**CAIXA DIRECAO**

Aplic. = SPRINTER 311/ 313/ 415/ 515/ CDI



Cod.Orig. = 906.460.0200 / 906.460.1700

Obs/Med. = C/ AXIAL (HIDRAULICA)  
Similar = AMPRI (25101)  
Mtg. =

11

**32-210**

**CALCO BORRACHA FEIXE MOLA**

Aplic. = SPRINTER 310/ 311/ 312/ 313/ 412/ 413



Cod.Orig. = 901.325.0744

Obs/Med. = TRAS.  
Similar = REI (R-3392)  
Mtg. =

12

**32-211**

**CALCO BORRACHA FEIXE MOLA**

Aplic. = SPRINTER



Cod.Orig. = 667.325.0084

Obs/Med. = TRAS. C/BICO  
Similar =  
Mtg. =

13

**32-309**

**CALCO BORRACHA FEIXE MOLA**

Aplic. = SPRINTER 310/ 311/ 312/ 313/ 412/ 413



Cod.Orig. = 901.325.0084

Obs/Med. = DIANT.  
Similar = REI (R-3335)  
Mtg. =

14

**33-136**

**CALOTA RODA**

Aplic. = SPRINTER



Cod.Orig. = 601.401.0325

Obs/Med. = ORIGINAL  
Similar =  
Mtg. =

15

**60-110**

**CAPO MOTOR**

Aplic. = SPRINTER 310 (1995A2003)



Cod.Orig. = 901.750.0002

Obs/Med. = ORIGINAL  
Similar =  
Mtg. =

16

**60-111**

**CAPO MOTOR**

Aplic. = SPRINTER CDI (2003A2013)



Cod.Orig. = 901.750.0202

Obs/Med. =  
Similar =  
Mtg. =

02

**82-033**

**BRACO LIMPADOR PARABRISA**

Aplic. = SPRINTER 310/ 311/ 312/ 313



Cod.Orig. = 901.820.0144

Obs/Med. = DIR.  
Similar =  
Mtg. =

03

**32-324**

**BUCHA BARRA ESTABILIZADORA**

Aplic. = SPRINTER 310D/ 311/ 312D/ 313C/ 408/ 411/ 412



Cod.Orig. = 904.326.0881

Obs/Med. = TRAS. C/FURO 27 MM  
Similar =  
Mtg. =

04

**32-325**

**BUCHA BARRA ESTABILIZADORA**

Aplic. = SPRINTER 310/ 311CD/ 313/ 408/ 411/ 412/ 413CDI



Cod.Orig. = 904.326.1081

Obs/Med. = TRAS. C/FURO 33 MM  
Similar =  
Mtg. =

05

**09-238**

**CABECOTE FILTRO COMBUSTIVEL**

Aplic. = SPRINTER 415/ 515/ (2016/...)



Cod.Orig. = 651.200.0356 / 651.200.0456

Obs/Med. = MOTOR MBB 906  
Similar =  
Mtg. =

LACTO: 06/2018

06

**72-266**

**CABO ACIONAMENTO MACANETA**

Aplic. = SPRINTER



Cod.Orig. = 901.760.0104

Obs/Med. = PORTA CORREDICA (983MM)  
Similar =  
Mtg. =

07

**57-030**

**CABO CAPO**

Aplic. = SPRINTER



Cod.Orig. = 901.750.0359

Obs/Med. = S/ALAVANCA  
Similar = CABOVEL (123056) / FANIA (60-371)  
Mtg. =

08

**42-006**

**CABO FREIO MAO**

Aplic. = SPRINTER 310



Cod.Orig. = 690.420.8885

Obs/Med. = 1295MM  
Similar = FANIA (60-344)  
Mtg. =

## REFERÊNCIA



## PRODUTOS EM ORDEM

MERCEDES



### 09 29-058A CILINDRO EMBREAGEM

Aplic. = SPRINTER 310/ 312



Cod.Orig. = 000.290.3212

Obs/Med. = MESTRE (SUPERIOR)  
Similar = VARGA (RCCE0104.0)  
Mtg. =

### 10 29-058B CILINDRO EMBREAGEM

Aplic. = SPRINTER



Cod.Orig. = 002.295.2107 / 002.295.0607

Obs/Med. = AUXILIAR (INFERIOR)  
Similar = VARGA (RCCE0075.0) / FLUIDLOC (300/4018) / WAYSER (WCL1005)  
Mtg. =

### 11 29-249 CILINDRO EMBREAGEM

Aplic. = SPRINTER 415/ 515



Cod.Orig. = 906.290.0212 / 906.290.0112

Obs/Med. = MESTRE  
Similar =  
Mtg. =

### 12 42-186 CILINDRO FREIO

Aplic. = SPRINTER 312/ 412 (1997/2002)



Cod.Orig. = 000.431.6301

Obs/Med. = MESTRE  
Similar =  
Mtg. =

### 13 61-080 COBERTURA ESPELHO

Aplic. = SPRINTER 415/ 515/ (2016/...)



Cod.Orig. = 906.811.0107

Obs/Med. = INFE.DIREITO  
Similar =  
Mtg. =

### 14 61-081 COBERTURA ESPELHO

Aplic. = SPRINTER 415/ 515/ (2014/...)



Cod.Orig. = 906.811.0007

Obs/Med. = INF.ESQUERDO  
Similar =  
Mtg. =

### 15 61-078 COBERTURA LANTERNA

Aplic. = SPRINTER 415/ 515/ (2014/...)



Cod.Orig. = 906.880.2771

Obs/Med. = SUP.ESQ.  
Similar =  
Mtg. =

### 16 61-079 COBERTURA LANTERNA

Aplic. = SPRINTER 415/ 515/ (2014/...)



Cod.Orig. = 906.880.2871 / 906.880.2671

Obs/Med. = SUP. DIR.  
Similar =  
Mtg. =

### 02 61-087 CAPO MOTOR

Aplic. = SPRINTER 415/ 515 (2014...)



Cod.Orig. = 906.880.0257 / 906.750.0002

Obs/Med. =  
Similar =  
Mtg. =

LACTO: 08/2018

### 03 41-784G CARDAN COMPLETO

Aplic. = SPRINTER 311/ 415/ 515 (2014...)



Cod.Orig. = 906.410.8416 / 906.410.6216

Obs/Med. = A= 1850MM FLANGE A FLANGE B= 990MM TUBO C= 335MM TUBO  
Similar =  
Mtg. = CRUZ. (801010)

LACTO: 04/2019

### 04 72-096 CARRINHO PORTA

Aplic. = SPRINTER 310 / 312 (1995/2002) / SPRINTER 311 / 313 (2003/2011)



Cod.Orig. = 901.760.0128

Obs/Med. = INFERIOR  
Similar =  
Mtg. =

### 05 72-190 CARRINHO PORTA

Aplic. = SPRINTER 310 / 311 / 312 / 313 (1995/2012)



Cod.Orig. = 901.760.1347

Obs/Med. = CENTRAL  
Similar =  
Mtg. =

LACTO: 01/2019

### 06 72-192 CARRINHO PORTA

Aplic. = SPRINTER 310 / 311 / 312 / 313 (1995/2012)



Cod.Orig. = 901.760.1047

Obs/Med. = SUPERIOR  
Similar =  
Mtg. =

LACTO: 01/2019

### 07 54-090D CHAVE SETA

Aplic. = SPRINTER 310 / 311 / 312 / 313 (1995/2011) 715C/ 915C/ ACELLO



Cod.Orig. = 001.540.4645 / 000.540.7445

Obs/Med. =  
Similar = KOSTAL (1403021)  
Mtg. =

### 08 43-348 CILINDRO ACIONAMENTO

Aplic. = ACELLO 915/ SPRINTER COM MOTOR OM904/ OM924



Cod.Orig. = 000.430.7526

Obs/Med. = FREIO MOTOR  
Similar =  
Mtg. =

LACTO: 06/2018

LACTO: 06/2018

LACTO: 06/2018

LACTO: 06/2018

## REFERÊNCIA



## PRODUTOS EM ORDEM

MERCEDES



09

**42-002**

**DISCO FREIO**

Aplic. = SPRINTER 412D/ 413CDI



Cod.Orig. = 904.423.0312

Obs./Med. = TRAS. RODA DUPLA  
Similar = VARGA (RCDI06380)  
Mtg. =

10

**42-242**

**DISCO FREIO**

Aplic. = SPRINTER 310/ 312



Cod.Orig. = 902.421.0612

Obs./Med. = DIANT.  
Similar =  
Mtg. =

11

**42-245**

**DISCO FREIO**

Aplic. = SPRINTER CDI 311/ 313



Cod.Orig. = 902.421.0712

Obs./Med. = DIANT.  
Similar =  
Mtg. =

12

**42-246**

**DISCO FREIO**

Aplic. = SPRINTER 311/ 312/ 412/ 413 (2001...)



Cod.Orig. = 902.423.0312

Obs./Med. = TRAS.  
Similar = VARGA (RCDI06370)  
Mtg. =

13

**42-247**

**DISCO FREIO**

Aplic. = SPRINTER CDI 311/ 313



Cod.Orig. = 902.423.0412

Obs./Med. = TRAS.  
Similar =  
Mtg. =

14

**81-039**

**ESPELHO RETROVISOR**

Aplic. = SPRINTER 310/ 312/ 313/ CDI



Cod.Orig. = 901.810.5516

Obs./Med. = ESQ. MANUAL  
Similar =  
Mtg. =

15

**81-040**

**ESPELHO RETROVISOR**

Aplic. = SPRINTER 310/ 312/ 313/ CDI



Cod.Orig. = 901.810.6416

Obs./Med. = DIR. MANUAL  
Similar =  
Mtg. =

16

**81-242**

**ESPELHO RETROVISOR**

Aplic. = SPRINTER (2014...)



Cod.Orig. = 906.810.6016

Obs./Med. = ESQ. (COM DESEMBACADOR ELETRICO)  
Similar =  
Mtg. =

LACTO: 07/2018

02

**61-084**

**COBERTURA LANTERNA**

Aplic. = SPRINTER 415/ 515/ (2014/...)



Cod.Orig. = 906.826.0040

LACTO: 06/2018

Obs./Med. = ESQ. (DEFLETOR PARACHOQUE TRAS.)  
Similar =  
Mtg. =

03

**61-085**

**COBERTURA LANTERNA**

Aplic. = SPRINTER 415/ 515/ (2016/...)



Cod.Orig. = 906.826.0140

LACTO: 06/2018

Obs./Med. = DIR. (REFLETOR PARACHOQUE TRAS.)  
Similar =  
Mtg. =

04

**44-002**

**CORREIA AUTOMOTIVA**

Aplic. = SPRINTER 310/ 312/ MAXION (1997...) 412D OM014LA



Cod.Orig. = 012.997.2792

Obs./Med. = AR CONDICIONADO  
Similar = DAYCO (4PK0980) / GATES (K040386) / CONTINENTAL (4PK0980)  
Mtg. =

05

**44-003**

**CORREIA AUTOMOTIVA**

Aplic. = SPRINTER



Cod.Orig. = 000.997.2293

Obs./Med. = CORREIA DENTADA C/MOTOR MAXION  
Similar = CONTINENTAL (40933K30XS) / CONTITECH (CT952HNBR)  
Mtg. =

06

**32-123**

**COXIM AMORTECEDOR**

Aplic. = SPRINTER 310/ 311/ 312/ 314/ 410/ 411/ 412/ 413/ 416/



Cod.Orig. = 901.323.0085

Obs./Med. = SUPERIOR  
Similar = REI (R-794)  
Mtg. =

07

**32-125**

**COXIM AMORTECEDOR**

Aplic. = SPRINTER 310/ 311/ 312/ 314/ 410/ 411/ 412/ 413/ 416/



Cod.Orig. = 901.323.1185

Obs./Med. = INFERIOR  
Similar = REI (R-793)  
Mtg. =

08

**801010**

**CRUZETA CARDAN**

Aplic. = 709/ 710/ SPRINTER



Cod.Orig. = 000.410.1231 / 000.410.2631

Obs./Med. = A=106,30 B=30,10  
Similar = DANA (5-160XS) / MECPAR (CR-1004) / STAHL (HCZ-210) (HCZ-281) / INPEL (CRI-160)  
Mtg. = ABRAC. (301086) / GRAMPO (41-107)



## REFERÊNCIA



## PRODUTOS EM ORDEM

MERCEDES



### 09 54-150 FAROL PRINCIPAL



Aplic. = SPRINTER CDI

Cod.Orig. = 901.820.2761

Obs/Med. = C/AUX. LENTE LISA DIR. (C/LAMPADA)

Similar = NINO (F-194)

Mtg. =

### 10 54-151 FAROL PRINCIPAL



Aplic. = SPRINTER CDI

Cod.Orig. = 901.820.2461

Obs/Med. = S/AUX. LENTE LISA ESQ.

Similar =

Mtg. =

### 11 54-152 FAROL PRINCIPAL



Aplic. = SPRINTER CDI

Cod.Orig. = 901.820.2561

Obs/Med. = S/AUX. LENTE LISA DIR.

Similar =

Mtg. =

### 12 54-153 FAROL PRINCIPAL



Aplic. = SPRINTER CDI

Cod.Orig. = 901.820.1461

Obs/Med. = LENTE RAIADA ESQ. (C/LAMPADA)

Similar =

Mtg. =

### 13 54-154 FAROL PRINCIPAL



Aplic. = SPRINTER CDI

Cod.Orig. = 901.820.1561

Obs/Med. = LENTE RAIADA DIR. (C/LAMPADA)

Similar =

Mtg. =

### 14 54-770 FAROL PRINCIPAL



Aplic. = SPRINTER 415/ 515 (2014/...)

Cod.Orig. = 906.820.0161

Obs/Med. = ESQ.

Similar =

Mtg. =

### 15 54-771 FAROL PRINCIPAL



Aplic. = SPRINTER 415/ 515 (2014/...)

Cod.Orig. = 906.820.0261

Obs/Med. = DIR.

Similar =

Mtg. =

### 16 72-276 FECHADURA PORTA



Aplic. = SPRINTER 310/ 312 (2002/2012)

Cod.Orig. = 901.730.1335

Obs/Med. = PORTA CORREDICA (PARTE DIANT.)

Similar =

Mtg. =

### 02 81-243 ESPELHO RETROVISOR



Aplic. = SPRINTER (2014/...)

Cod.Orig. = 906.810.6116

Obs/Med. = DIR. (COM DESEMBACADOR ELETRICO)

Similar =

Mtg. =

LACTO: 07/2018

### 03 81-263 ESPELHO RETROVISOR



Aplic. = SPRINTER CDI 313/ 415/ 515 (CHASSI)

Cod.Orig. = 906.810.6516

Obs/Med. = ESQ. BRACO LONGO (COM DESEMBACADOR ELETRICO)

Similar =

Mtg. =

LACTO: 02/2019

### 04 81-264 ESPELHO RETROVISOR



Aplic. = SPRINTER CDI 313/ 415/ 515 (CHASSI)

Cod.Orig. = 906.810.6416

Obs/Med. = DIR. BRACO LONGO (COM DESEMBACADOR ELETRICO)

Similar =

Mtg. =

LACTO: 02/2019

### 05 61-154 ESTRIBO PARACHOQUE



Aplic. = SPRINTER 415/ 515

Cod.Orig. = 906.885.0011

Obs/Med. = INFERIOR

Similar =

Mtg. =

LACTO: 08/2018

### 06 54-768 FAROL AUXILIAR



Aplic. = SPRINTER 415/ 515 (2014/...)

Cod.Orig. = 906.820.0856

Obs/Med. = ESQ.

Similar =

Mtg. =

LACTO: 01/2020

### 07 54-769 FAROL AUXILIAR



Aplic. = SPRINTER 415/ 515 (2014/...)

Cod.Orig. = 906.820.0956

Obs/Med. = DIR.

Similar =

Mtg. =

LACTO: 01/2019

### 08 54-149 FAROL PRINCIPAL



Aplic. = SPRINTER CDI

Cod.Orig. = 901.820.2661

Obs/Med. = C/AUX. LENTE LISA ESQ. (C/LAMPADA)

Similar = NINO (F-193)

Mtg. =

## REFERÊNCIA



## PRODUTOS EM ORDEM

MERCEDES



09

**35-325**

**FLANGE DIFERENCIAL**

Aplic. = SPRINTER 310/ 311/ 312/ 313/ 410



Cod.Orig. = 901.353.0145

Obs./Med. = 4 FUROS 27 ESTRIAS RET. 40 MM C/CAMBIO G.28 (ACO)  
Similar =  
Mtg. =

02

**72-277**

**FECHADURA PORTA**

Aplic. = SPRINTER 310/ 312 (2002/2012)



Cod.Orig. = 901.730.1135

Obs./Med. = PORTA CORREDICA (PARTE TRAS.)  
Similar =  
Mtg. =

10

**07-083**

**FLEXIVEL BOMBA VACUO**

Aplic. = SPRINTER 310/ 312/ 412



Cod.Orig. = 000.238.0056

Obs./Med. = MAIOR 530MM (MOTOR MAXION 2.5)  
Similar =  
Mtg. =

03

**72-278**

**FECHADURA PORTA**

Aplic. = SPRINTER ATEGO AXOR LS1938/ 1938S/ 1944S (1997/2012)



Cod.Orig. = 901.720.1035 / 901.720.0135 / 000.720.6535

Obs./Med. = PORTA DIANT. ESQ  
Similar =  
Mtg. =

11

**09-094**

**FLEXIVEL TURBINA**

Aplic. = SPRINTER 310



Cod.Orig. = 000.096.0590

Obs./Med. = ANTIGO (BANJO 12MM)  
Similar =  
Mtg. =

04

**72-279**

**FECHADURA PORTA**

Aplic. = SPRINTER ATEGO AXOR LS1938/ 1938S/ 1944S (1997/2012)



Cod.Orig. = 901.720.1135 / 901.720.0235 / 000.720.6835

Obs./Med. = PORTA DIANT. DIR  
Similar =  
Mtg. =

12

**09-095**

**FLEXIVEL TURBINA**

Aplic. = SPRINTER 312



Cod.Orig. = 000.096.0490

Obs./Med. = MODERNO (BANJO 10X12)  
Similar =  
Mtg. =

05

**72-305**

**FECHADURA PORTA**

Aplic. = SPRINTER



Cod.Orig. = 901.740.0135

Obs./Med. = PORTA TRAS.  
Similar =  
Mtg. =

13

**61-130**

**FRISO GRADE FRONTAL**

Aplic. = SPRINTER CDI 313/ 415/ 515/ (2014...)



Cod.Orig. = 906.880.0051

LACTO: 08/2018

Obs./Med. =  
Similar =  
Mtg. =

06

**72-412**

**FECHADURA PORTA**

Aplic. = SPRINTER



Cod.Orig. = 901.730.1935

Obs./Med. = PORTA LATERAL C/TRAVA (ESCOLAR)  
Similar =  
Mtg. =

14

**61-131**

**FRISO GRADE FRONTAL**

Aplic. = SPRINTER CDI 415 (2014...)



Cod.Orig. = 906.888.0085 / 906.888.0185 / 906.888.0285

LACTO: 08/2018

Obs./Med. = KIT (CROMADO)  
Similar =  
Mtg. =

07

**26-318**

**FLANGE CAMBIO**

Aplic. = SPRINTER 310/ 311/ 312



Cod.Orig. = 690.262.7245

Obs./Med. = 4 FUROS 22 ESTRIAS RET. 76,2 MM C/CAMBIO G.28 ACO  
Similar =  
Mtg. = CRUZ. (801010)

15

**301070**

**GARFO CARDAN (DE SOLDAR)**

Aplic. = SPRINTER



Cod.Orig. = 690.411.0005

Obs./Med. = ENCAIXE TUBO 85 MM (5-160X) ACO  
Similar = DANA (3-28-557) / MECPAR (GR-1037) / REI (S-717) / STAHL (HGF-618)  
Mtg. = CRUZ. (801010)

08

**41-265**

**FLANGE CARDAN (DE ORELHA)**

Aplic. = SPRINTER 312/ 142



Cod.Orig. =

Obs./Med. = 4 FUROS ADAPTAÇÃO DISCO 120 MM (5-160X) ACO  
Similar = SOROCARD (SF-20)  
Mtg. = CRUZ. (801010)

16

**25-138**

**GARFO EMBREAGEM**

Aplic. = SPRINTER 310D/ 312D/ 412D



Cod.Orig. = 901.250.0021

Obs./Med. =  
Similar =  
Mtg. =

## REFERÊNCIA



## PRODUTOS EM ORDEM

MERCEDES



09

**20-026**

**HELICE RADIADOR MOTOR**

Aplic. = SPRINTER CDI 311D / 313D / 314D / 315D (...2011)



Cod.Orig. = 103.200.0423

Obs/Med. = PLASTICO S/VISCO (9 PAS)  
Similar = MODEFER (1932-165)  
Mtg. =

10

**72-772**

**INTERRUPTOR ACIONAMENTO VIDRO**

Aplic. = SPRINTER 415/ 515/ (2016/...)



Cod.Orig. = 906.545.1213

Obs/Med. = ESQ.  
Similar =  
Mtg. =

11

**72-773**

**INTERRUPTOR ACIONAMENTO VIDRO**

Aplic. = SPRINTER 415/ 515/ (2016/...)



Cod.Orig. = 906.545.1913 / 906.545.0913

Obs/Med. = DIR.  
Similar =  
Mtg. =

12

**72-822**

**INTERRUPTOR ACIONAMENTO VIDRO**

Aplic. = SPRINTER 415/ 515/ (2014/...)



Cod.Orig. = 906.545.1013

Obs/Med. = ESQ.  
Similar =  
Mtg. =

**LACTO: 08/2018**

13

**58-044**

**JUNTA CABECOTE MOTOR**

Aplic. = SPRINTER CDI 208/ 211/ 213/ 308/ 311/ 313/ 408/ 411/ 413/



Cod.Orig. = 646.016.0520

Obs/Med. = MOTOR OM611A OM646 (1.20MM METALICA)  
Similar =  
Mtg. =

14

**58-010**

**JUNTA CARTER**

Aplic. = SPRINTER CDI 208/ 211/ 213/ 308/ 311/ 313/ 408/ 411/ 413/



Cod.Orig. = 646.014.0122

Obs/Med. = ORIGINAL (MOTOR OM611 OM646 OM651)  
Similar =  
Mtg. =

15

**58-030**

**JUNTA COLETOR ESCAPAMENTO**

Aplic. = SPRINTER CDI 208/ 211/ 213/ 308/ 311/ 313/ 408/ 411/ 413/



Cod.Orig. = 611.142.0780

Obs/Med. = ESCAPE (MOTOR OM646 OM611)  
Similar =  
Mtg. =

16

**58-007**

**JUNTA MOTOR**

Aplic. = SPRINTER CDI 208/ 211/ 213/ 308/ 311/ 313/ 408/ 411/ 413/



Cod.Orig. = 611.010.0605

Obs/Med. = JOGO INFERIOR COM RETENTOR (OM611)  
Similar =  
Mtg. =

02

**60-039**

**GRADE FRONTAL**

Aplic. = SPRINTER CDI 208/ 211/ 216/ 311/ 316/ 408/ 411/ 413/ 416/ 616



Cod.Orig. = 901.880.0385

Obs/Med. = C/ESTRELA  
Similar =  
Mtg. =

**LACTO: 09/2018**

03

**60-049**

**GRADE FRONTAL**

Aplic. = SPRINTER 310 (1995/2002)



Cod.Orig. = 901.880.0183

Obs/Med. = S/ESTRELA  
Similar =  
Mtg. =

04

**61-076**

**GRADE FRONTAL**

Aplic. = SPRINTER 415/ 515/ (ANO 2014...)



Cod.Orig. = 906.888.0523 / 906.880.0785

Obs/Med. = SEM EMBLEMA  
Similar =  
Mtg. =

05

**61-128**

**GRADE FRONTAL**

Aplic. = SPRINTER 415/ 515 (ANO 2014...)



Cod.Orig. = 906.885.0053

Obs/Med. = PARACHOQUE DIANT.  
Similar =  
Mtg. =

**LACTO: 08/2018**

06

**46-009**

**GUARDA-PO CAIXA DIRECAO**

Aplic. = SPRINTER



Cod.Orig. = 901.460.5500

Obs/Med. = COMPLETA  
Similar =  
Mtg. =

07

**20-011**

**HELICE RADIADOR MOTOR**

Aplic. = SPRINTER 310D/ 312D/ 412D



Cod.Orig. = 000.200.0004 / 000.200.4523

Obs/Med. = PLASTICO S/VISCO (11 PAS)  
Similar = MAXION (70360055)  
Mtg. =

08

**20-015**

**HELICE RADIADOR MOTOR**

Aplic. = SPRINTER CDI MOTOR : (2005 A 2011) CDI 311D / 313D / 314D / 315D / 316D MOTOR : 611LA



Cod.Orig. = 000.200.4923 / 000.200.5023

Obs/Med. = PLASTICO C/VISCO  
Similar =  
Mtg. =



## REFERÊNCIA



## PRODUTOS EM ORDEM

MERCEDES



09

**54-767**

**LANTERNA SETA**

Aplic. = SPRINTER 415/ 515 (2014...)



Cod.Orig. = 003.820.2956

**LACTO: 06/2018**

Obs./Med. = LATERAL  
Similar =  
Mtg. =

10

**54-940**

**LANTERNA SETA**

Aplic. = SPRINTER 415/ 515 (2014...)



Cod.Orig. = 001.820.4921

**LACTO: 08/2018**

Obs./Med. = ESQ.(C/SOQUETE)  
Similar =  
Mtg. =

11

**54-941**

**LANTERNA SETA**

Aplic. = SPRINTER 415/ 515 (2014...)



Cod.Orig. = 001.820.5021

**LACTO: 08/2018**

Obs./Med. = DIR.(C/SOQUETE)  
Similar =  
Mtg. =

12

**82-021**

**LANTERNA SETA**

Aplic. = SPRINTER



Cod.Orig. = 210.820.0421

Obs./Med. = LATERAL AMBAR  
Similar =  
Mtg. =

13

**82-022**

**LANTERNA SETA**

Aplic. = SPRINTER



Cod.Orig. = 210.820.0421

Obs./Med. = LATERAL CRISTAL  
Similar =  
Mtg. =

14

**54-007**

**LANTERNA TRASEIRA**

Aplic. = SPRINTER CDI



Cod.Orig. = 000.826.1656

Obs./Med. = DIR. BICOLOR  
Similar =  
Mtg. =

15

**54-008**

**LANTERNA TRASEIRA**

Aplic. = SPRINTER CDI



Cod.Orig. = 000.826.1556

Obs./Med. = ESQ. BICOLOR  
Similar =  
Mtg. =

16

**54-260**

**LANTERNA TRASEIRA**

Aplic. = SPRINTER CHASSIS CARROCERIA



Cod.Orig. = 002.544.5403

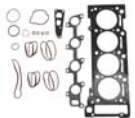
Obs./Med. = ESQ.  
Similar =  
Mtg. =

02

**58-029**

**JUNTA MOTOR**

Aplic. = SPRINTER CDI 208/ 211/ 213/ 308/ 311/ 313/ 408/ 411/ 413/ (OM611 OM646)



Cod.Orig. = 611.010.5720 / 611.010.4520

Obs./Med. = JOGO SUPERIOR (SEM TAMPA VALVULA)  
Similar =  
Mtg. =

03

**58-023**

**JUNTA TAMPA VALVULA**

Aplic. = SPRINTER 310D (1997/2001)



Cod.Orig. = 000.016.0221 / 000.016.0621

Obs./Med. = MOTOR MAXION 2.5 M014LA  
Similar = MAXION (70490309)  
Mtg. =

04

**54-633**

**LANTERNA ESPELHO RETROVISOR**

Aplic. = SPRINTER (2014...)



Cod.Orig. = 001.822.8920

Obs./Med. = ESQ.  
Similar =  
Mtg. =

05

**54-634**

**LANTERNA ESPELHO RETROVISOR**

Aplic. = SPRINTER (2014...)



Cod.Orig. = 001.822.9020

Obs./Med. = DIR.  
Similar =  
Mtg. =

06

**54-766**

**LANTERNA PLACA**

Aplic. = SPRINTER 415/ 515 (2014...)



Cod.Orig. = 639.820.0256

**LACTO: 06/2018**

Obs./Med. =  
Similar =  
Mtg. =

07

**54-009**

**LANTERNA SETA**

Aplic. = SPRINTER 310



Cod.Orig. = 901.820.0121

Obs./Med. = DIANT. ESQ.  
Similar =  
Mtg. =

08

**54-010**

**LANTERNA SETA**

Aplic. = SPRINTER 310



Cod.Orig. = 901.820.0221

Obs./Med. = DIANT. DIR.  
Similar =  
Mtg. =

## REFERÊNCIA



## PRODUTOS EM ORDEM

MERCEDES



### 09 72-239 MACANETA PORTA

Aplic. = SPRINTER



Cod.Orig. = 901.760.0459

Obs./Med. = EXTERNA C/CHAVE CORREDICA

Similar =  
Mtg. =

### 10 72-259 MACANETA PORTA

Aplic. = SPRINTER/ 1938



Cod.Orig. = 000.760.1359

Obs./Med. = EXTERNA C/CHAVE DIANT./TRAS.

Similar =  
Mtg. =

### 11 20-118 MANGUEIRA BOMBA VACUO AO CARTER

Aplic. = SPRINTER 310/ 312



Cod.Orig. = 000.238.0082

Obs./Med. =  
Similar =  
Mtg. =

### 12 09-142 MANGUEIRA INTERCOOLER

Aplic. = SPRINTER 310/ 312



Cod.Orig. = 690.528.7482

Obs./Med. = ORIGINAL  
Similar =  
Mtg. =

### 13 50-083 MANGUEIRA INTERCOOLER

Aplic. = SPRINTER 313 CDI



Cod.Orig. = 901.528.4782

Obs./Med. = PRETA (ORIGINAL)  
Similar =  
Mtg. =

### 14 50-086 MANGUEIRA INTERCOOLER

Aplic. = SPRINTER



Cod.Orig. = 690.528.7582

Obs./Med. = LADO DIR.  
Similar =  
Mtg. =

### 15 50-091 MANGUEIRA INTERCOOLER

Aplic. = SPRINTER CDI 311/ 313



Cod.Orig. = 901.528.4382

Obs./Med. = PRETA (ORIGINAL)  
Similar =  
Mtg. =

### 16 50-025 MANGUEIRA RADIADOR

Aplic. = SPRINTER



Cod.Orig. = 690.500.7575

Obs./Med. = INFERIOR  
Similar =  
Mtg. =

### 02 54-261 LANTERNA TRASEIRA

Aplic. = SPRINTER CHASSIS CARROCERIA



Cod.Orig. = 002.544.5503

Obs./Med. = DIR.  
Similar =  
Mtg. =

### 03 54-519 LANTERNA TRASEIRA

Aplic. = SPRINTER (2013...)



Cod.Orig. = 000.826.0451 / 906.820.0164

Obs./Med. = ESQ. (COM CIRCUITO P/ LAMPADAS)  
Similar =  
Mtg. =

### 04 54-520 LANTERNA TRASEIRA

Aplic. = SPRINTER (2013...)



Cod.Orig. = 000.826.0551 / 906.820.0264

Obs./Med. = DIR. (COM CIRCUITO P/ LAMPADAS)  
Similar =  
Mtg. =

### 05 54-264 LENTE LANTERNA

Aplic. = SPRINTER CHASSIS CARROCERIA



Cod.Orig. = 002.544.4790

Obs./Med. = TRAS.  
Similar =  
Mtg. =

### 06 41-112 LUVA CARDAN

Aplic. = SPRINTER



Cod.Orig. = 690.410.0108

Obs./Med. = 16 ESTRIAS (5-160X) ACO  
Similar = DANA (03-312XS) (3-3-707100) / MECPAR (LV-1947) (LV-1061) / MERITOR (801415)  
Mtg. = CRUZ. (801010) / PONT. (41-115)

### 07 72-166 MACANETA PORTA

Aplic. = SPRINTER (1997/2012)



Cod.Orig. = 901.760.1361

Obs./Med. = INTERNA CORREDICA ORIGINAL  
Similar =  
Mtg. =

### 08 72-207 MACANETA PORTA

Aplic. = 1938/ SPRINTER



Cod.Orig. = 000.760.1359

Obs./Med. = EXTERNA S/CHAVE DIANT./TRAS.  
Similar =  
Mtg. =

## REFERÊNCIA



## PRODUTOS EM ORDEM

MERCEDES



### 09 82-028 PALHETA LIMPADOR PARABRISA

Aplic. = SPRINTER (1995/2012)



Cod.Orig. = 005.820.9645

Obs./Med. = JOGO  
Similar =  
Mtg. =

### 10 82-047 PALHETA LIMPADOR PARABRISA

Aplic. = SPRINTER 415/ 515 (2013...)



Cod.Orig. = 001.820.3945

Obs./Med. = = CONCATENAR("JOGO (24" E 26")")  
Similar =  
Mtg. =

LACTO: 06/2018

### 11 60-045 PARACHOQUE DIANTEIRO

Aplic. = SPRINTER CDI 311/ 313/ (2003/2011)



Cod.Orig. = 690.880.7070 / 901.880.0670

Obs./Med. = PLASTICO CINZA  
Similar =  
Mtg. =

### 12 60-048 PARACHOQUE DIANTEIRO

Aplic. = SPRINTER 310/ 312/ 412 (1997/2003)



Cod.Orig. = 901.880.0270

Obs./Med. = PLASTICO  
Similar =  
Mtg. =

### 13 61-077 PARACHOQUE DIANTEIRO

Aplic. = SPRINTER CDI 313/ 415/ 515 (2014...)



Cod.Orig. = 906.880.1270 / 906.880.1370 / 906.880.0170

Obs./Med. = PLASTICO (SEM FAROL NEBLINA)  
Similar =  
Mtg. =

### 14 61-129 PARACHOQUE DIANTEIRO

Aplic. = SPRINTER CDI 313/ 415/ 515 (2014...)



Cod.Orig. = 906.880.4170 / 906.880.0570 / 906.880.1670

Obs./Med. = PLASTICO (COM FAROL NEBLINA)  
Similar =  
Mtg. =

LACTO: 08/2018

### 15 60-525 PARACHOQUE TRASEIRO

Aplic. = SPRINTER FURGÃO



Cod.Orig. = 901.885.0202

Obs./Med. = PLASTICO (CENTRAL)  
Similar =  
Mtg. =

LACTO: 08/2018

### 16 61-124 PARACHOQUE TRASEIRO

Aplic. = SPRINTER CDI 313/ 415/ 515/ (2014...)



Cod.Orig. = 906.880.1071 / 906.880.4571 / 906.880.1271

Obs./Med. = ESQ. (PONTEIRA)  
Similar =  
Mtg. =

LACTO: 08/2018

### 02 72-176 MAQUINA VIDRO PORTA

Aplic. = SPRINTER (1997A2012)



Cod.Orig. = 901.720.1446

Obs./Med. = ESQ.  
Similar =  
Mtg. =

### 03 72-177 MAQUINA VIDRO PORTA

Aplic. = SPRINTER (1997A2012)



Cod.Orig. = 901.720.1546

Obs./Med. = DIR.  
Similar =  
Mtg. =

### 04 72-803 MAQUINA VIDRO PORTA

Aplic. = SPRINTER (2012...)



Cod.Orig. = 906.720.0046

Obs./Med. = ESQ. ELETRICA (SEM MOTOR)  
Similar =  
Mtg. =

LACTO: 10/2018

### 05 72-804 MAQUINA VIDRO PORTA

Aplic. = SPRINTER (2012...)



Cod.Orig. = 906.720.0146

Obs./Med. = DIR. ELETRICA (SEM MOTOR)  
Similar =  
Mtg. =

LACTO: 10/2018

### 06 32-244 MOLAS

Aplic. = SPRINTER FURGÃO / VAN / CHASSI 310 / 311 / 312 / 313 (1997...)



Cod.Orig. = 903.320.0001

Obs./Med. = SUSPENSÃO DIANT. (BITOLA 110X12,1)  
Similar =  
Mtg. =

### 07 60-112 PAINEL FRONTAL

Aplic. = SPRINTER (1995/2002)



Cod.Orig. = 901.880.0351

Obs./Med. = DIANT. ORIGINAL  
Similar =  
Mtg. =

### 08 61-153 PAINEL FRONTAL

Aplic. = SPRINTER 415/ 515



Cod.Orig. = 906.620.0024

Obs./Med. = DIANTEIRO  
Similar =  
Mtg. =

LACTO: 08/2018

## REFERÊNCIA



## PRODUTOS EM ORDEM

MERCEDES



09

**61-083**

**PARALAMA DIANTEIRO**

Aplic. = SPRINTER 415/ 515 (2014...)



Cod.Orig. = 906.637.7819

**LACTO: 06/2018**

Obs./Med. = DIR.  
Similar =  
Mtg. =

02

**61-125**

**PARACHOQUE TRASEIRO**

Aplic. = SPRINTER CDI 313/ 415/ 515/ (2014...)



Cod.Orig. = 906.880.1171 / 906.880.1371 / 906.880.2371

**LACTO: 08/2018**

Obs./Med. = DIR. (PONTEIRA)  
Similar =  
Mtg. =

10

**42-178**

**PASTILHA FREIO (JG)**

Aplic. = SPRINTER 310/ 311



Cod.Orig. = 002.420.4120

Obs./Med. = DIANT.  
Similar =  
Mtg. =

03

**41-538**

**PARAFUSO TERMINAL CARDAN**

Aplic. = SPRINTER/ CRUZETA 5-160X



Cod.Orig. = 688.990.7101

Obs./Med. = 8 X 1 X 20MM  
Similar =  
Mtg. = ABRAC. (301086) / CRUZ. (801010)

11

**42-178A**

**PASTILHA FREIO (JG)**

Aplic. = SPRINTER 310/ 311



Cod.Orig. = 003.420.2420

Obs./Med. = TRAS.  
Similar =  
Mtg. =

04

**60-053**

**PARALAMA DIANTEIRO**

Aplic. = SPRINTER CDI 310/ 312/ 412 (1997A2003)



Cod.Orig. = 901.630.6907

Obs./Med. = ESQ.  
Similar =  
Mtg. =

12

**42-184**

**PASTILHA FREIO (JG)**

Aplic. = SPRINTER 310/ 312/ 314/ 410 (1995/2000) 311CDI/ 313 (2002...)



Cod.Orig. = 002.420.6020

Obs./Med. = TRAS. (SISTEMA TEVIS)  
Similar =  
Mtg. =

05

**60-054**

**PARALAMA DIANTEIRO**

Aplic. = SPRINTER CDI 310/ 312/ 412 (1997A2003)



Cod.Orig. = 901.630.7007

Obs./Med. = DIR.  
Similar =  
Mtg. =

13

**42-185**

**PASTILHA FREIO (JG)**

Aplic. = SPRINTER CDI 311/ 308/ 316/ 313/ 314/ 410



Cod.Orig. = 004.420.2420

Obs./Med. = DIANT.  
Similar = BENDIX (HQ-2218) / COBREQ (N-731)  
Mtg. =

06

**60-084**

**PARALAMA DIANTEIRO**

Aplic. = SPRINTER 311/ 313/ 413 (2004A2013)



Cod.Orig. = 901.637.3001

Obs./Med. = ESQ.  
Similar =  
Mtg. =

14

**42-265**

**PASTILHA FREIO (JG)**

Aplic. = SPRINTER 313 (2006...)



Cod.Orig. = 003.420.1720

Obs./Med. = DIANT.  
Similar =  
Mtg. =

07

**60-085**

**PARALAMA DIANTEIRO**

Aplic. = SPRINTER 311/ 313/ 413 (2004A2013)



Cod.Orig. = 901.637.3101

Obs./Med. = DIR.  
Similar =  
Mtg. =

15

**46-087**

**PIVO DIRECAO**

Aplic. = SPRINTER 310/ 311/ 312/ 313/ 412/ 413



Cod.Orig. = 901.333.1127 / 901.333.0727 / 901.333.1227

Obs./Med. = M20 X 1,50MM  
Similar = ZL BRASIL (ZL-001MBP)  
Mtg. =

08

**61-082**

**PARALAMA DIANTEIRO**

Aplic. = SPRINTER 415/ 515 (2014...)



Cod.Orig. = 906.637.7719

**LACTO: 06/2018**

Obs./Med. = ESQ.  
Similar =  
Mtg. =

16

**15-033**

**POLIA ALTERNADOR**

Aplic. = SPRINTER CDI 311/ 313/ 415/ 515



Cod.Orig. = 611.155.0715

Obs./Med. =  
Similar =  
Mtg. =



## REFERÊNCIA



## PRODUTOS EM ORDEM

MERCEDES



09

**61-086**

**QUADRO RADIADOR**

Aplic. = SPRINTER 415/ 515/ (2016/...)



Cod.Orig. = 906.880.0203 / 906.880.0603

LACTO: 06/2018

Obs/Med. =  
Similar =  
Mtg. =

02

**20-185**

**POLIA TENSORA CORREIA**

Aplic. = SPRINTER CDI/ ACCELO 715C



Cod.Orig. = 000.202.0019

Obs/Med. = ESTRIADA (PLASTICO)  
Similar = NYTRON (1228) / SKF (VKM4922)  
Mtg. =

10

**50-087**

**RADIADOR D'AGUA**

Aplic. = SPRINTER CDI 311/ 313 (2002/2011)



Cod.Orig. = 901.500.3500 / 901.500.3600

Obs/Med. = ORIGINAL (MOTOR OM611)  
Similar =  
Mtg. =

03

**20-261**

**POLIA TENSORA CORREIA**

Aplic. = SPRINTER CDI/ ACCELO 715C/ MOTOR OM611/ 612



Cod.Orig. = 611.234.0293 / 611.234.0193 / 611.234.0093

Obs/Med. = ESTRIADA  
Similar = NYTRON (1253)  
Mtg. =

11

**18-073**

**RADIADOR OLEO MOTOR**

Aplic. = SPRINTER CDI/ ACCELO 715



Cod.Orig. = 646.188.0301 / 611.188.0301 / 612.188.0101

Obs/Med. = ORIGINAL (MOTOR OM611)  
Similar =  
Mtg. =

04

**20-411**

**POLIA TENSORA CORREIA**

Aplic. = SPRINTER 415/ 515 (2012...)



Cod.Orig. = 651.200.0670 / 000.202.1319

Obs/Med. = ESTRIADA (PLASTICO)  
Similar = INA (F-566749)  
Mtg. =

12

**43-399**

**REPARO PINCA FREIO**

Aplic. = SPRINTER 310/ 312



Cod.Orig. = 000.420.2151 / 000.421.1448

Obs/Med. = PARCIAL (COPO 44 MM)  
Similar =  
Mtg. =

05

**20-412**

**POLIA TENSORA CORREIA**

Aplic. = SPRINTER 415/ 515 (2014...)



Cod.Orig. = 651.200.0770 / 000.202.0419

Obs/Med. = LISA (PLASTICO) (PEQUENA)  
Similar = INA (F-566748) / NYTRON (7740)  
Mtg. =

13

**43-400**

**REPARO PINCA FREIO**

Aplic. = SPRINTER 310/ 312



Cod.Orig. = 000.420.2151

Obs/Med. = COMPLETO (COPO 44MM)  
Similar =  
Mtg. =

06

**20-426**

**POLIA TENSORA CORREIA**

Aplic. = SPRINTER 415/ 515 (2014...)



Cod.Orig. = 651.200.0270 / 651.200.0370

Obs/Med. = LISA PLASTICO (GRANDE)  
Similar = INA (F-554184)  
Mtg. =

14

**46-474**

**RESERVATORIO OLEO**

Aplic. = SPRINTER 312D/ 412D ACCELO



Cod.Orig. = 000.460.0583 / 979.466.0002

Obs/Med. = DIRECAO HIDRAULICA  
Similar = ZF (AR71152) (0081 172 090) / MONARCA (60.038)  
Mtg. =

07

**20-523**

**POLIA TENSORA CORREIA**

Aplic. = SPRINTER 2.5 (1997A2000)



Cod.Orig. = 000.200.0970

Obs/Med. =  
Similar =  
Mtg. = TENSOR (20-450)

15

**41-214**

**ROLAMENTO CARDAN C/BORRACHA**

Aplic. = 914C/ 712C/ 1214K/ 1214C/ SPRINTER 310D/ FURGÃO/ PICK-UP/ VAN STD



Cod.Orig. =

Obs/Med. = Ø 40 MM PISTA LARGA APLIC. CAVALETE 45 MM  
Similar = REI (R-252AR)  
Mtg. = CAVALETE (41-102) / CINTA (41-104)

08

**41-115**

**PONTEIRA CARDAN (INTERMEDIARIA)**

Aplic. = SPRINTER



Cod.Orig. = 690.411.0002

Obs/Med. = 16 ESTRIAS ROL. 40 MM (ENCAIXE TUBO 85 MM)  
Similar = DANA (53-443) (53-1443) / MECPAR (PT-1026) / STAHL (HPT-621) / MERITOR (801612)  
Mtg. = LUVA (41-112)

16

**50-224**

**SAIA RADIADOR**

Aplic. = SPRINTER 415/ 515 (2014...)



Cod.Orig. = 906.505.0855

Obs/Med. =  
Similar =  
Mtg. =

## REFERÊNCIA



## PRODUTOS EM ORDEM

MERCEDES

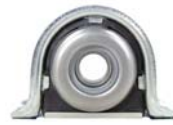


09

**41-215**

**SUPORTE CARDAN COMPLETO**

Aplic. = 914C/ 712C/ 1214K/ 1214C/ SPRINTER 310D/ FURGÃO/ PICK-UP/ VAN STD



Cod.Orig. = 000.410.0622

Obs./Med. = Ø 40 MM (APLIC. CAVALETE Ø 45 MM)

Similar = DANA (210391-1X) / REI (R-3038) (R-3079)

Mtg. = CAVALETE (41-102) / CINTA (41-104) / DEFL. (41-051A) / ROLAM. (41-214)

10

**41-375**

**SUPORTE CARDAN COMPLETO**

Aplic. = 1618/ 1614/ 1721/ 1418E/ 1620/ OF1620/ SPRINTER CDI 311/ 313 (2003...)



Cod.Orig. = 000.410.0222

Obs./Med. = Ø 45 MM C/BICO GRAXEIRO

Similar = REI (R-1006) (R-1043) (R-3030) (R-3064) / STAHL (HBS-603)

Mtg. = ROLAM. (41-320) (R-1007) (R-1042) (R-3031)

11

**41-831**

**SUPORTE CARDAN COMPLETO**

Aplic. = SPRINTER 308CDI/ 311CDI/ 312D/ 313CDI/ 314/ 316CDI/ 408CDI/ 411CDI/ 413CDI/ 414CDI/ 414/ 416CDI



Cod.Orig. = 903.410.0010

LACTO: 12/2019

Obs./Med. = Ø 45MM

Similar = REI (R-3052)

Mtg. =

12

**41-834**

**SUPORTE CARDAN COMPLETO**

Aplic. = SPRINTER/ 310D FURGÃO/ PICK-UP/ VAN STD



Cod.Orig. = 000.410.0622

LACTO: 12/2019

Obs./Med. = Ø 40 MM

Similar = REI (R-3079)

Mtg. =

13

**41-386**

**SUPORTE CARDAN COMPLETO C/REGULAG.**

Aplic. = 1618/ 1614/ 1721/ 1418E/ 1620/ OF1620/ SPRINTER CDI 311/ 313 (2003...)



Cod.Orig. = 000.410.0222 / 000.410.1122

Obs./Med. = Ø 45 MM C/BICO GRAX.

Similar = REI (R-1016) (R-3034) (R-3062) (R-3077) (R-1075)

Mtg. = BASE (41-460) / ROLAM. (41-320) (R-1007) (R-1042)

14

**41-414**

**SUPORTE CARDAN COMPLETO C/REGULAG.**

Aplic. = 1618/ 1614/ 1721/ 1418E/ 1620/ OF1620/ SPRINTER CDI 311/ 313 (2003...)



Cod.Orig. = 000.410.0222

Obs./Med. = Ø 45 MM C/BICO GRAX. (S/REFIL)

Similar = REI (R-3042) (R-3080) (R-3051) (R-3081) / STAHL (HBS-611)

Mtg. =

15

**20-110**

**TENSOR CORREIA ALTERNADOR**

Aplic. = SPRINTER 310/ 312



Cod.Orig. = 000.030.0069 / 000.230.0523

LACTO: 06/2018

Obs./Med. = POLIA LISA (MOTOR DIESEL MAXION 2.5 HSD)

Similar = DAYCO (DYT270) / CONTINENTAL (V58615) / SKF (VKM4788) / INA (F1405641)

Mtg. =

16

**20-117**

**TENSOR CORREIA ALTERNADOR**

Aplic. = SPRINTER 310/ 312



Cod.Orig. = 000.200.0670

Obs./Med. = MOTOR MAXION

Similar = NYTRON (7832)

Mtg. =

08

**41-053**

**SUPORTE CARDAN COMPLETO**

Aplic. = SPRINTER 310/ 312



Cod.Orig. = 000.200.0670

Obs./Med. = Ø 45 MM PISTA LARGA C/BICO GRAX.

Similar = DANA (47-956-13XR) / REI (R-3051) (R-3085) (R-3095) (R-3052)

Mtg. = CAVALETE (41-102) / CINTA (41-101) / ROLAM. (41-054)

02

**42-273**

**SAPATA FREIO**

Aplic. = SPRINTER 412/ 413



Cod.Orig. = 002.420.5920

Obs./Med. = JOGO TRAS.

Similar =

Mtg. =

03

**42-319**

**SENSOR PASTILHA FREIO**

Aplic. = SPRINTER



Cod.Orig. = 901.540.0017

Obs./Med. =

Similar = BOSCH (1987474969)

Mtg. =

04

**54-208**

**SENSOR VELOCIMETRO**

Aplic. = SPRINTER 310/ 312



Cod.Orig. = 690.542.7117

Obs./Med. = 4 SAIDAS

Similar =

Mtg. =

05

**54-255**

**SENSOR VELOCIMETRO**

Aplic. = SPRINTER 310



Cod.Orig. = 012.542.1717

Obs./Med. = 2 FIOS

Similar =

Mtg. =

06

**49-047**

**SILENCIOSO ESCAPAMENTO**

Aplic. = SPRINTER 310/ 312/ 412



Cod.Orig. = 690.490.7201

Obs./Med. = ORIGINAL

Similar =

Mtg. =

07

**41-046**

**SUPORTE CARDAN COMPLETO**

Aplic. = SPRINTER 310/ 312



Cod.Orig. = 000.030.0069 / 000.230.0523

Obs./Med. = Ø 45 MM PISTA LARGA

Similar = DANA (210084-2X) / REI (R-1064) (R-3052) (R-3082)

Mtg. = CAVALETE (41-102) / CINTA (41-101) / DEFL. (41-051A) / ROLAM. (41-100)

## REFERÊNCIA



## PRODUTOS EM ORDEM

MERCEDES



09

**15-026**

**VELA AQUECEDORA**

Aplic. = SPRINTER 310/ 312



Cod.Orig. = 000.150.0081

Obs/Med. = M10 X 1,0MM

Similar =

Mtg. =

10

**81-265**

**VIDRO ESPELHO**

Aplic. = SPRINTER 415/ 515 (2014...)



Cod.Orig. = 002.811.5233

Obs/Med. = ESQ. C/DESEMBACADOR (MAIOR)

Similar =

Mtg. =

LACTO: 12/2019

11

**81-266**

**VIDRO ESPELHO**

Aplic. = SPRINTER 415/ 515 (2014...)



Cod.Orig. = 002.811.5333

Obs/Med. = DIR. C/DESEMBACADOR (MAIOR)

Similar =

Mtg. =

12

**81-267**

**VIDRO ESPELHO**

Aplic. = SPRINTER 415/ 515 (2014...)



Cod.Orig. = 002.811.3933

Obs/Med. = ESQ. C/DESEMBACADOR (MENOR)

Similar =

Mtg. =

LACTO: 02/2019

13

**81-268**

**VIDRO ESPELHO**

Aplic. = SPRINTER 415/ 515 (2014...)



Cod.Orig. = 002.811.4033

Obs/Med. = DIR. C/DESEMBACADOR (MENOR)

Similar =

Mtg. =

LACTO: 02/2019

14

**46-256**

**VOLANTE DIRECAO**

Aplic. = SPRINTER 310/ 312/ 412 (1997/2003)



Cod.Orig. = 901.460.0203

Obs/Med. = MODELO ORIGINAL (CINZA)

Similar = OMEGA (MB51017)

Mtg. =

07

**18-003**

**VALVULA ANTI CHAMA**

Aplic. = SPRINTER



Cod.Orig. = 000.016.0010

Obs/Med. =

Similar =

Mtg. =

08

**43-718**

**VALVULA PNEUMATICA**

Aplic. = SPRINTER CDI/ ACCELLO 715



Cod.Orig. = 000.545.0527

Obs/Med. = SOLENOIDE

Similar =

Mtg. =

LACTO: 05/2019