



Linha Polias e Tensores

Edição: OUTUBRO/2020

- 1 - PDF para consultar, baixar ou imprimir.
- 2 - Os produtos e suas aplicações estão em ordem alfabética.
- 3 - Se desejar, consulte o ÍNDICE, e digite a página (observar a localização do item na página).



(11)
4529-1444



Contatar
Depto. de Vendas

Produto	Pag	Fig	Produto	Pag	Fig	Produto	Pag	Fig
POLIAS E TENSORES			POLIA TENSORA CORREIA	12	2			
AGRALE			SCANIA					
POLIA TENSORA CORREIA	3	2	POLIA TENSOR CORREIA	12	4			
TENSOR CORREIA ALTERNADOR	3	3	POLIA TENSORA CORREIA	12	7			
CITROEN			TENSOR CORREIA ALTERNADOR	13	2			
POLIA TENSORA CORREIA	3	6	TOYOTA					
TENSOR CORREIA ALTERNADOR	3	10	POLIA TENSORA CORREIA	13	12			
DAF			TENSOR CORREIA ALTERNADOR	13	13			
TENSOR CORREIA ALTERNADOR	3	12	TROLLER					
FIAT			POLIA TENSORA CORREIA	13	15			
POLIA TENSORA CORREIA	3	14	TENSOR CORREIA ALTERNADOR	13	16			
TENSOR CORREIA ALTERNADOR	4	3	VOLKSWAGEN					
FORD			POLIA TENSORA CORREIA	14	2			
POLIA TENSORA CORREIA	4	7	SUPORTE TENSOR CORREIA	15	4			
SUPORTE TENSOR CORREIA	4	14	TENSOR CORREIA ALTERNADOR	15	5			
TENSOR CORREIA ALTERNADOR	4	15	VOLVO					
FOTON			POLIA TENSOR CORREIA	16	6			
TENSOR CORREIA ALTERNADOR	6	4	POLIA TENSORA CORREIA	16	8			
GEN. MOTORS			TENSOR CORREIA ALTERNADOR	16	14			
POLIA TENSORA CORREIA	6	6						
TENSOR CORREIA ALTERNADOR	6	9						
HYUNDAI								
TENSOR CORREIA ALTERNADOR	6	16						
INTERNATIONAL								
TENSOR CORREIA ALTERNADOR	7	2						
IVECO								
POLIA ALTERNADOR	7	4						
POLIA TENSOR CORREIA	7	5						
POLIA TENSORA CORREIA	7	6						
TENSOR CORREIA ALTERNADOR	7	13						
JEEP								
POLIA ALTERNADOR	8	6						
TENSOR CORREIA ALTERNADOR	8	7						
LAND ROVER								
TENSOR CORREIA ALTERNADOR	8	9						
MERCEDES								
POLIA ALTERNADOR	8	12						
POLIA BOMBA D'AGUA	8	13						
POLIA DESVIADORA CORREIA	8	14						
POLIA TENSORA CORREIA	9	5						
TENSOR CORREIA ALTERNADOR	10	5						
MITSUBISHI								
TENSOR CORREIA ALTERNADOR	11	5						
NISSAN								
POLIA TENSORA CORREIA	11	7						
TENSOR CORREIA ALTERNADOR	11	8						
PEUGEOT								
POLIA ALTERNADOR	11	10						
POLIA TENSORA CORREIA	11	11						
TENSOR CORREIA ALTERNADOR	11	15						
RENAULT								

REFERÊNCIA



PRODUTOS EM ORDEM

AGRALE



09

20-464

POLIA TENSORA CORREIA

Aplic. = JUMPER MULTJET 2.3 (2010/...)



Cod.Orig. = 575113

Obs./Med. = PLASTICO LISA
Similar = DAYCO (APV1074) / NYTRON (1255) / GATES (T36396) / INA (532029810)
Mtg. =

02

20-417

POLIA TENSORA CORREIA

Aplic. = VOLARE 2.8 TURBO MWM (...2003)



Cod.Orig. = 6008001592002

Obs./Med. = FERRO
Similar = NYTRON (1128)
Mtg. = TENSOR (20-296)

10

20-459

TENSOR CORREIA ALTERNADOR

Aplic. = JUMPER 2.3 HDI (2010...)



Cod.Orig. = 575112

Obs./Med. = POLIA PLASTICO
Similar = DAYCO (APV1075) / NYTRON (7839)
Mtg. =

03

20-256

TENSOR CORREIA ALTERNADOR

Aplic. = VOLARE W8/ W9



Cod.Orig. = 6009101016009

Obs./Med. = POLIA ESTRIADA (C/MOTOR 4 E 6 CIL MWM X-12)
Similar = MWM (961203410046) / NYTRON (1242CS)
Mtg. =

REFERÊNCIA



PRODUTOS EM ORDEM

DAF



12

20-539

TENSOR CORREIA ALTERNADOR

Aplic. = CF85/ XF95/ XF105



Cod.Orig. = 1809098 / 1879665 / 1918441 / 1942517

LACTO: 09/2020

Obs./Med. =
Similar =
Mtg. =

REFERÊNCIA



PRODUTOS EM ORDEM

CITROËN



06

20-415

POLIA TENSORA CORREIA

Aplic. = JUMPER 2.5 (1995A1998) JUMPER 2.8 TURBO DIESEL (1999A2009)



Cod.Orig. = 99.432.547

Obs./Med. = CORREIA DENTADA
Similar = DAYCO (DYT251) / NYTRON (7752)
Mtg. =

14

20-415

POLIA TENSORA CORREIA

Aplic. = DUCATO 2.5/ 2.8 DIESEL (1997...)



Cod.Orig. = 99.461.357

Obs./Med. = CORREIA DENTADA
Similar = DAYCO (DYT251) / NYTRON (7752)
Mtg. =

07

20-416

POLIA TENSORA CORREIA

Aplic. = JUMPER 2.5



Cod.Orig. = 0830.32

Obs./Med. =
Similar = DAYCO (247) / NYTRON (7751)
Mtg. =

15

20-416

POLIA TENSORA CORREIA

Aplic. = DUCATO 2.5



Cod.Orig. = 4.740.847 / 504104988

Obs./Med. =
Similar = DAYCO (247) / NYTRON (7751)
Mtg. =

08

20-463

POLIA TENSORA CORREIA

Aplic. = JUMPER



Cod.Orig. = 504106751 / 500346226

Obs./Med. = POLIA LISA FERRO
Similar = DAYCO (APV1040) / GATES (T36401)
Mtg. =

16

20-463

POLIA TENSORA CORREIA

Aplic. = DUCATO



Cod.Orig. = 504106751 / 500346226

Obs./Med. = POLIA LISA FERRO
Similar = DAYCO (APV1040) / GATES (T36401)
Mtg. =

REFERÊNCIA



PRODUTOS EM ORDEM

FIAT



09 20-318

POLIA TENSORA CORREIA



Aplic. = F12000/ F14000/ F16000 (1999A2005) MOTOR CUMMINS 6BTAA 5.9 (6 CILINDROS) F350/ F4000 (1999...) MOTOR CUMMINS 4BTAA 3.9 (4 CILINDROS)

Cod.Orig. = BG3T10B300AA / BF5T10B300B / BF0T10B300CA / BG1T10B30

Obs/Med. = MOTOR CUMMINS (LISA FERRO)

Similar =

Mtg. = TENSOR (20-150)

10 20-417

POLIA TENSORA CORREIA



Aplic. = F250 4.2 MWM (NOV. 2000...)

Cod.Orig. = BF9T10B300AA

Obs/Med. = FERRO

Similar = NYTRON (1128)

Mtg. = TENSOR (20-296)

11 20-514

POLIA TENSORA CORREIA



Aplic. = TRANSIT (2008/2011)

Cod.Orig. = YC1E9444AD / YC1E9444AE

Obs/Med. = LISA

Similar = DAYCO (APV2680) (ATB2326) / RUVILLE (55265)

Mtg. =

LACTO: 06/2018

12 20-521

POLIA TENSORA CORREIA



Aplic. = TRANSIT 2.4 (2009A2013)

Cod.Orig. = 6C1Q6A228BB / 6C1Q6A228BC

Obs/Med. = LISA

Similar = NITRON (1213)

Mtg. = TENSOR (20-454)

LACTO: 12/2018

13 20-523

POLIA TENSORA CORREIA



Aplic. = RANGER 2.5 (1198A2001) RANGER 2.8 (2002A2006) F1000 (1994A1998)

Cod.Orig. = BF0T10B300DA

Obs/Med. =

Similar =

Mtg. = TENSOR (20-450)

LACTO: 12/2018

14 20-448

SUPOORTE TENSOR CORREIA



Aplic. = 815E/ 1317E/ 1517E/ 1717E/ 1722E/ 2422E/ 2428E/ 2622E/ 2628E MOTOR CUMMINS ISB 4 E 6 CIL

Cod.Orig. = BH4X25884A / BH1X25884AA

Obs/Med. = S/POLIA

Similar = CUMMINS (3358264) (5295048)

Mtg. = POLIA (20-292) / TENSOR (20-447)

LACTO: 06/2018

15 20-110

TENSOR CORREIA ALTERNADOR



Aplic. = F1000/ RANGER/ (1996/2001)

Cod.Orig. = BF5T6B209A / BF7T6B209A / BF5T6B209B / BF7T6B209

Obs/Med. = POLIA LISA (MOTOR DIESEL MAXION 2.5 HSD)

Similar = DAYCO (DYT270) / CONTINENTAL (V58615) / SKF (VKM4788) / INA (F1405641)

Mtg. =

LACTO: 06/2018

16 20-117

TENSOR CORREIA ALTERNADOR



Aplic. = RANGER/ (1998/2012) F1000 (1994/1998)

Cod.Orig. = BG2T10B300AA / BF5T10B300A

Obs/Med. = MOTOR MAXION

Similar = NYTRON (7832)

Mtg. =

REFERÊNCIA



PRODUTOS EM ORDEM

FORD



07 20-292

POLIA TENSORA CORREIA



Aplic. = 815E/ 1317E/ 1517E/ 1717E/ 1722E/ 2422E/ 2428E/ 2622E/ 2628E (2005...)

Cod.Orig. = BG5X2884AA

Obs/Med. = ESTRIADA (MOTOR CUMMINS ISB 4 E 6 CIL)

Similar = CUMMINS (3971876)

Mtg. = SUPORTE (20-448) / TENSOR (20-447)

08 20-317

POLIA TENSORA CORREIA



Aplic. = 1617/ 1215/ 1217/ 1415/ 1417/ 1617/ 1721/ 1621/ 1721/ 1421/ 1417/ 1521/ 1317/ 1717/ 1721/ 1517/ 2322/ 3530/ 4331/ 2626/ 3530/ 2425/ 2622/ 1622/ 1630/ 1731/ 4030

Cod.Orig. = BG4X10B300AA / BF0T10B300BA

Obs/Med. = ESTRIADA

Similar = SKF (VKM4933)

Mtg. = TENSOR (20-148)

REFERÊNCIA



PRODUTOS EM ORDEM

FORD



09

20-293

TENSOR CORREIA ALTERNADOR



Aplic. = F1000/ F4000/ F11000/ F14000 TODOS C/MOTOR MWM 229

Cod.Orig. = T11145275A

Obs/Med. = POLIA EM V (85 MM) FERRO

Similar = MWM (922903410045)

Mtg. =

10

20-295

TENSOR CORREIA ALTERNADOR



Aplic. = F12000/ F14000HD (1992/1995)

Cod.Orig. = TNR145927 / WE4T2884C

Obs/Med. = POLIA 2 PISTAS (MOTOR MWM 229 6CIL)

Similar = MWM (922903810634)

Mtg. =

11

20-296

TENSOR CORREIA ALTERNADOR



Aplic. = F250 MOTOR MWM (2000/2012)

Cod.Orig. = BF9T10B300AA

Obs/Med. = POLIA LISA CHAPA (MOTOR SPRINT 2.8)

Similar = NYTRON (7819) / MWM (940703800024) (940703410074) / CONTINENTAL (V58624) / DAYCO (

Mtg. =

12

20-444

TENSOR CORREIA ALTERNADOR



Aplic. = F350/ F4000 (2014...) MOTOR CUMMINS ISF 2.8

Cod.Orig. = BH3T10B300AA

Obs/Med. =

Similar = CUMMINS (5262500)

Mtg. =

13

20-446

TENSOR CORREIA ALTERNADOR



Aplic. = FORD 2428/ 2628/ 2422/ 1722/ 1723/ 2423/ 2629/ 1729/ 815/ 3133/ 1933/ 1317E/ 1517E/ 1717E (2005...)

Cod.Orig. = BH0X10B300AA / BG5X10B300AA / BH0X10B300AA

LACTO: 05/2018

Obs/Med. = C/KIT PARAFUSOS (MOTOR CUMMINS ISC 8.3 ISB 5.9 ISB 3.9)

Similar = CUMMINS (5270455) (3965589)

Mtg. =

14

20-447

TENSOR CORREIA ALTERNADOR



Aplic. = 815E/ 1317E/ 1517E/ 1717E/ 1722E/ 2422E/ 2428E/ 2622E/ 2628E MOTOR CUMMINS ISB 4 E 6CIL (2005...)

Cod.Orig. = BG5X2S884AA

LACTO: 05/2018

Obs/Med. = SUPORTE C/POLIA ESTRIADA

Similar = CUMMINS (3358265)

Mtg. = POLIA (20-292) / SUPORTE (20-448)

15

20-450

TENSOR CORREIA ALTERNADOR



Aplic. = F350/ F4000 C/AR CONDICIONADO (1998/2005)

Cod.Orig. = BF0T10B300DA / BF0T10B300A / BF8T10B300A

Obs/Med. = POLIA LISA (MOTOR CUMMINS 4BTAA 3.9)

Similar = CUMMINS (3967189) / GATES (38513)

Mtg. =

16

20-454

TENSOR CORREIA ALTERNADOR



Aplic. = TRANSIT 2.4 (2008/2011)

Cod.Orig. = 6C1Q6A228BC / 6C1Q6A228BB

Obs/Med. =

Similar = SKF (VKM34702)

Mtg. =

02

20-148

TENSOR CORREIA ALTERNADOR



Aplic. = 2322/ 3530/ 3224/ 1422/ 1622/ 1722/ 2422/ 2622/ 2425/ 2626/ 1630/ 1731/ 4030/ 4031/ 2630/ 2631/ 1730/ 2622/ 2421/ 2422/ 5031/ 1722/ 4331/ 2831/ MOTOR CUMMINS 6CTAA8.3

Cod.Orig. = BF0T10B300BA / BG4X10B300AA / 2F0 145 299B / TJG145275

Obs/Med. = MOTOR CUMMINS 6CTAA 6BTAA (POLIA ESTRIADA)

Similar = DAYCO (89415) / GATES (38518) / CUMMINS (3936210) (3967190)

Mtg. = POLIA (20-317)

03

20-150

TENSOR CORREIA ALTERNADOR



Aplic. = F12000/ F14000/ F16000 (1999A2005) MOTOR CUMMINS 6BTAA 5.9 (6 CILINDROS) F350/ F4000 (1999...) MOTOR CUMMINS 4BTAA 3.9 (4 CILINDROS)

Cod.Orig. = BG3T10B300AA / BF5T10B300B / BF0T10B300CA / BG1T10B30

Obs/Med. = MOTOR CUMMINS (POLIA LISA FERRO)

Similar = DAYCO (89409) / GATES (38504) / CUMMINS (3967188) (3937553) / VANNUCCI (VA10150)

Mtg. = POLIA (20-318)

04

20-157

TENSOR CORREIA ALTERNADOR



Aplic. = CARGO 814/ F350/ F4000/ F12000/ F14000/ F16000

Cod.Orig. = BG1T10B300AA / BF5T10B300B / BF0T10B300CA / BG3T10B3

Obs/Med. = C/MOTOR CUMMINS 4BT 3.9L 6BTAA 5.9 (POLIA LISA)

Similar = CUMMINS (3937553)

Mtg. =

05

20-168

TENSOR CORREIA ALTERNADOR



Aplic. = F12000/ F14000/ B1618/ B1621 (1993/1998)

Cod.Orig. = 2RP903157 / 04128509 / W08T10145C / 2RD903139

Obs/Med. = MOTOR MWM X-10 (POLIA FERRO) MICRO V

Similar = DAYCO (DYV723) / MWM (941003410016)

Mtg. =

06

20-169

TENSOR CORREIA ALTERNADOR



Aplic. = SAPAO F12000 (1993/1995)

Cod.Orig. = T12145275

Obs/Med. = MOTOR MWM 229 6CIL (POLIA 1 PISTA FERRO EM V 97,50 MM)

Similar = NYTRON (7728)

Mtg. =

07

20-235

TENSOR CORREIA ALTERNADOR



Aplic. = NOVO CARGO EXTRA PESADO 2042/ 2842 MOTOR 10.3L (2013...)

Cod.Orig. = DC466A228AA

Obs/Med. = ALTERNADOR (POLIA LISA)

Similar =

Mtg. =

08

20-288

TENSOR CORREIA ALTERNADOR



Aplic. = TRANSIT (2008 A 2011)

Cod.Orig. = 6C1Q19A216BA

Obs/Med. =

Similar =

Mtg. =

LACTO: 06/2018

REFERÊNCIA



PRODUTOS EM ORDEM

FORD



09 20-110 TENSOR CORREIA ALTERNADOR



Aplic. = BLAZER/ S10/

Cod.Orig. = 52251292 / 70670195 / 70810058

LACTO: 06/2018

Obs./Med. = POLIA LISA (MOTOR DIESEL MAXION 2.5 HSD)
Similar = DAYCO (DYT270) / CONTINENTAL (V58615) / SKF (VKM4788) / INA (F1405641)
Mtg. =

10 20-117 TENSOR CORREIA ALTERNADOR



Aplic. = BLAZER/ S10/ (1996/2000)

Cod.Orig. = 70520171

Obs./Med. = MOTOR MAXION
Similar = NYTRON (7832)
Mtg. =

11 20-296 TENSOR CORREIA ALTERNADOR



Aplic. = S.10/ BLAZER 2,8TURBO (2000A2011)

Cod.Orig. = 93297735 / 93341438 / 93342246 / 93342438

Obs./Med. = POLIA LISA CHAPA (MOTOR SPRINT 2.8)
Similar = NYTRON (7819) / MWM (940703800024) (940703410074) / CONTINENTAL (V58624) / DAYCO ()
Mtg. =

12 20-420 TENSOR CORREIA ALTERNADOR



Aplic. = BLAZER 2.2/ 2.4 8V/ S10 2.2/ 2.4 8V (1996...) AGILE 1.4 (2010...) ASTRA 1.8 (0998...) ASTRA 2.0 (1995...) CELTA/ PRISMA 1.0/1.4 (2004...) COBALT 1.4/ 1.8 (2012...)

Cod.Orig. = 90.530.122 / 90.530.124

Obs./Med. = CORREIA DENTADA
Similar = NYTRON (7796)
Mtg. =

13 20-420 TENSOR CORREIA ALTERNADOR



Aplic. = CORSA CLASSIC 1.0/ 1.4/ 1.6 FLEX (2002...) 1.8 FLEX (2005...) / MONZA/ KADET/ IPANEMA 1.8/ 2.0 (96/98)/ ONIX 1.0/ 1.4 (2013...)/ OMEGA/ SUPREMA 2.0 (9/94)

Cod.Orig. = 90.530.122 / 90.530.124

Obs./Med. = CORREIA DENTADA
Similar = NYTRON (7796)
Mtg. =

14 20-420 TENSOR CORREIA ALTERNADOR



Aplic. = SPIN 1.8 ECONO-FLEX (2013...) VECTRA/ NOVO VECTRA 2.0/ 2.2 (1994...) ZAFIRA 2.0 (2001...)

Cod.Orig. = 90.530.122 / 90.530.124

Obs./Med. = CORREIA DENTADA
Similar = NYTRON (7796)
Mtg. =

REFERÊNCIA



PRODUTOS EM ORDEM

GEN. MOTORS



06 20-417 POLIA TENSORA CORREIA



Aplic. = BLAZER/ S-10 2.8 TURBO (2000...)

Cod.Orig. = MWE34101 / 93354738P

Obs./Med. = FERRO
Similar = NYTRON (1128)
Mtg. = TENSOR (20-296)

07 20-418 POLIA TENSORA CORREIA



Aplic. = S10/ BLAZER V6

Cod.Orig. = 10239670 / 12456152 / 89017309

Obs./Med. =
Similar = DAYCO (DYV779)
Mtg. =

08 20-523 POLIA TENSORA CORREIA



Aplic. = S-10/ BLAZER (1996A2000)

Cod.Orig. = 70.520.171 / 70.992.880

Obs./Med. =
Similar =
Mtg. = TENSOR (20-450)

16 20-421 TENSOR CORREIA ALTERNADOR



Aplic. = GALLOPER 2.5 TURBO DIESEL (98/99) H1 2.5 TURBO DIESEL (1999...) H100 2.5 TURBO DIESEL (1994 A 2001) HR 2.5 TURBO DIESEL (2005...)

Cod.Orig. = MD050125

Obs./Med. = CORREIA DENTADA
Similar = NYTRON (7757)
Mtg. =

REFERÊNCIA



PRODUTOS EM ORDEM

HYUNDAI



REFERÊNCIA



PRODUTOS EM ORDEM

INTERNATIONAL



09

20-415

POLIA TENSORA CORREIA



Aplic. = DAILY/ NEW DAILY/ NEW T. DAILY 2.8 DIESEL 35.12/ 60.13/ 35.10/ 70.13/ 70.12/ 50.13/ 40.13/ 35.13/ 59.12/ 49.12 (EURO 3)

Cod.Orig. = 99.432.547 / 503643822 / 504068266 / 2992484

Obs./Med. = CORREIA DENTADA
Similar = DAYCO (DYT251) / NYTRON (7752)
Mtg. =

10

20-416

POLIA TENSORA CORREIA



Aplic. = DAILY 60.13/ 70.13/ 50.13/ 40.13/ 35.13/ 38.13/ A50.13/ A42.13/ A36.13

Cod.Orig. = 503641825 / 2992485 / 4740847 / 2997798

Obs./Med. = INFERIOR LISA
Similar = DAYCO (247) / NYTRON (7751)
Mtg. =

11

20-461

POLIA TENSORA CORREIA



Aplic. = STRALIS/ 450S42/ 200S42/ 570S42/ 570S38/ 450S38/ 740S42/ NOVO STRALIS 490S39/ 740S46/ 570S46/ 200S38/ 800S44/ 600S56/ TRAKKER 720T42/ 380T42/ 410T42/ EUROTCH 45031T/ 190E31/ TECTOR 240E25/ 170E25/ EU

LACTO: 10/2017

Cod.Orig. = 504006261 / 500318393 / 99469677

Obs./Med. = FERRO LISA
Similar = DAYCO (APV1060) / GATES (T36195)
Mtg. =

12

20-463

POLIA TENSORA CORREIA



Aplic. = DAILY 35S14/ 45S14/ 50C15/ 50C17/ 55C16/ 70C16

Cod.Orig. = 504106751 / 500346226

Obs./Med. = POLIA LISA FERRO
Similar = DAYCO (APV1040) / GATES (T36401)
Mtg. =

13

20-233

TENSOR CORREIA ALTERNADOR



Aplic. = TECTOR 170E22/ 150E28/ 180E30/ 260E25/ 240E25/ 230E22/ 170E28/ 240E28/ EUROARGO 170E22/ 150E28/ 180E30/ 160E30/ 170E22/ 230E24/ 160E18/ VERTS 130V91/ 90V18/ 90V16/ 130V18/ ONIBUS CC118E20/ CC170E22/

Cod.Orig. = 504315785 / 504065874 / 4891116 / 4898548

Obs./Med. = ALTERNADOR (MOTOR 6CIL ELETTRONICO)
Similar =
Mtg. =

14

20-234

TENSOR CORREIA ALTERNADOR



Aplic. = NOVO STRALIS 800S/ 600S/ 490S/ 200S/ 740S/ 570S/ NOVO TRAKKER 720T/ 380T/ 410T/ 500T/ 740T/ STRALIS 450S/ 200S/ 570S/ 740S/ 380S/ TECTOR 240E25/ 170E25/ CURSOR 450E/ 180E/ EUROARGO 450E/ 180E/ 260E/

Cod.Orig. = 504046191 / 99436331 / 99471920 / 531048110

Obs./Med. = ALTERNADOR (POLIA LISA)
Similar = DAYCO (APV1048) / GATES (38576)
Mtg. =

15

20-332

TENSOR CORREIA ALTERNADOR



Aplic. = NOVO STRALIS/ 490S40/ 490S44/ 600S44/ 800S44/ 800S48/ HD450S38/ HD490S42/ HD570S42/ HD740S46/ NR490S38/ NR570S38/ NR490S41/ NR490S46/ NR570S41/ NR570S46/ NR740S41

Cod.Orig. = 500350419 / 500350419AS

Obs./Med. = C/AR CONDICIONADO (MOTOR CUSOR 13)
Similar = INA (531060820) / SKF (VKMCV52001)
Mtg. =

16

20-453

TENSOR CORREIA ALTERNADOR



Aplic. = CURSOR 450-E33T (ANO 09 A 12) EUROARGO 450-32T (ANO 07 A 12) TODOS COM AR CONDICIONADO

LACTO: 10/2017

Cod.Orig. = 99449176

Obs./Med. =
Similar = DAYCO (APV1049)
Mtg. =

02

20-319

TENSOR CORREIA ALTERNADOR



Aplic. = 4700/ 4900

Cod.Orig. = 1830033C2 / 1830033C1

Obs./Med. = MOTOR CUMMINS ISM M11
Similar = DAYCO (DYV-89401) (89442) / GATES (38507) (49507) / CUMMINS (3102888)
Mtg. =

04

15-050

POLIA ALTERNADOR



Aplic. = NOVA DAILY/ ONIBUS 45S17/ 50C17/ 55C17/ 70C17 ONIBUS 50C17/ 55C17/ 45S17/

Cod.Orig. = 504088796

Obs./Med. = FERRO ESTRIADA
Similar = SKF (VKM03203) / VETOR (VT8518)
Mtg. =

05

20-527

POLIA TENSOR CORREIA



Aplic. = NOVO STRALIS 800S/ 600S/ 490S/ 200S/ 740S/ 570S/ NOVO TRAKKER 720T/ 380T/ 410T/ 500T/ 740T/ STRALIS 450S/ 200S/ 570S/ 740S/ 380S/ TECTOR 240E25/ 170E25/ CURSOR 450E/ 180E/ EUROARGO 450E/ 180E/ 260E/

LACTO: 11/2019

Cod.Orig. = 504046191 / 99436331 / 99471920 / 531048110

Obs./Med. = LISA FERRO
Similar =
Mtg. = TENSOR (20-234)

06

20-275

POLIA TENSORA CORREIA



Aplic. = VERTIS 90V18/ 130V19/ 130V18 TECTOR 170E22/ 260E25/ 240E25/ 170E25/ 170E28/ 240E30/ 170E30/ 260E30 EUROARGO 170E24/ 180E30/ 170E22/ 230E24/ 260E25 ONIBUS CC170E22/ CC118E22/ 170S28

Cod.Orig. = 504065877 / 4892356 / 2852398

Obs./Med. = SUPERIOR
Similar = DAYCO (APV-1085) / SKF (VKMCV52007) / INA (532.0290.10) (532.0577.10)
Mtg. =

07

20-276

POLIA TENSORA CORREIA



Aplic. = VERTIS 90V18/ 130V19/ 130V18 TECTOR 170E22/ 260E25/ 240E25/ 170E25/ 170E28/ 240E30/ 170E30/ 260E30 EUROARGO 170E24/ 180E30/ 170E22/ 230E24/ 260E25 ONIBUS CC170E22/ CC118E22/ 170S28

Cod.Orig. = 504065878 / 4897031 / 2831113

Obs./Med. = INFERIOR
Similar = DAYCO (APV1043) / GATES (T36196)
Mtg. =

08

20-414

POLIA TENSORA CORREIA



Aplic. = L

Cod.Orig. = 504065874 / 504315785 / 4898548

Obs./Med. = LISA FERRO
Similar = NYTRON (1314)
Mtg. =

REFERÊNCIA

IVECO

PRODUTOS EM ORDEM

IVECO



09

20-110

TENSOR CORREIA ALTERNADOR



Aplic. = DEFENDER 90/110/130 DISCOVERY

LACTO: 06/2018

Cod.Orig. = LHP1000860 / LHV100150 / LHP1000860

Obs./Med. = POLIA LISA (MOTOR DIESEL MAXION 2.5 HSD)
Similar = DAYCO (DYT270) / CONTINENTAL (V58615) / SKF (VKM4788) / INA (F1405641)
Mtg. =

10

20-117

TENSOR CORREIA ALTERNADOR



Aplic. = DEFENDER 2.5 TDI / DISCOVERY 2.5 TDI (1992/2006)

Cod.Orig. = ERR4708

Obs./Med. = MOTOR MAXION
Similar = NYTRON (7832)
Mtg. =

03

20-458

TENSOR CORREIA ALTERNADOR



Aplic. = NOVO STRALIS 450S33/ 460E36/ 500S33/ 530S36/
NOVO TRAKKER 310T36 (2013/...)

LACTO: 10/2017

Cod.Orig. = 504072744

Obs./Med. = POLIA FERRO (MOTOR IVECO CURSOR 9)
Similar = DAYCO (APV1147) / SKF (VKMCV52015)
Mtg. =

12

15-033

POLIA ALTERNADOR



Aplic. = SPRINTER CDI 311/ 313/ 415/ 515

Cod.Orig. = 611.155.0715 / 611.155.0315 / 611.155.0515

Obs./Med. =
Similar = RANALLE (R6810) / DAYCO (ALP2354)
Mtg. =

13

20-055

POLIA BOMBA D'AGUA



Aplic. = OM352/ 1113/ 1114/ 1313/ 1316/ 1317/ 1513/ 1516/
1517/ 2013/ 2213

Cod.Orig. = 352.202.0210 / 352.200.0605

Obs./Med. = PEQUENA ALUMINIO (CANAL TRIPLO) OM352
Similar = REI (R-489P)
Mtg. =

14

20-207

POLIA DESVIADORA CORREIA



Aplic. = TODOS C/MOTOR OM904/ OM904/ OM924/ OM926

Cod.Orig. = 906.200.1170 / 906.200.0470

Obs./Med. = ORIGINAL (FIXADO BOMBA COMBUSTIVEL)
Similar =
Mtg. =

15

20-321

POLIA DESVIADORA CORREIA



Aplic. = TODOS C/MOTOR OM904/ OM906/ OM924/ OM926/
OM457

Cod.Orig. = 906.200.4470 / 906.200.3370

Obs./Med. = ORIGINAL (COMPRESSOR AR CONDICIONADO)
Similar =
Mtg. =

16

20-405

POLIA DESVIADORA CORREIA



Aplic. = OM457/ ONIBUS O.500

Cod.Orig. = 000.200.2370

Obs./Med. = ESTRIADA (FERRO TIPO ORIGINAL)
Similar =
Mtg. =

REFERÊNCIA

Jeep

PRODUTOS EM ORDEM

Jeep



06

15-033

POLIA ALTERNADOR



Aplic. = GRAND CHEROKEE LAREND0 2.7 (DIESEL)

Cod.Orig. = 5117591AA

Obs./Med. =
Similar = RANALLE (R6810) / DAYCO (ALP2354)
Mtg. =

07

20-186

TENSOR CORREIA ALTERNADOR



Aplic. = GRAND CHEROKEE 2.7 10V (DIESEL)

Cod.Orig. = 68001798AB

Obs./Med. = POLIA LISA
Similar = NYTRON (7865)
Mtg. =

REFERÊNCIA

LAND-ROVER

PRODUTOS EM ORDEM

LAND ROVER



REFERÊNCIA



PRODUTOS EM ORDEM

MERCEDES



09

20-246

POLIA TENSORA CORREIA

Aplic. = AXOR/ OM904/ OM906/ OM924/ OM457LA



Cod.Orig. = 906.200.2070P

Obs./Med. = LISA (TENSOR PEQUENO)

Similar =

Mtg. = TENSOR (20-116)

10

20-261

POLIA TENSORA CORREIA

Aplic. = SPRINTER CDI/ ACCELO 715C/ MOTOR OM611/ 612



Cod.Orig. = 611.234.0293 / 611.234.0193 / 611.234.0093 / 611.234.0393

Obs./Med. = ESTRIADA

Similar = NYTRON (1253)

Mtg. =

11

20-274

POLIA TENSORA CORREIA

Aplic. = 0.500 ELETRONICO



Cod.Orig. = 457.200.3270P

Obs./Med. = POLIA LISA

Similar =

Mtg. = TENSOR (20-129)

12

20-282

POLIA TENSORA CORREIA

Aplic. = AXOR/ ATEGO (TODOS C/MOTOR OM457) (A PARTIR MOTOR 931488)



Cod.Orig. = 000.550.0733

Obs./Med. = ESTRIADA

Similar =

Mtg. =

13

20-287

POLIA TENSORA CORREIA

Aplic. = OM904/ OMM906/ OMJ924/ OM926



Cod.Orig. = 906.200.2670P / 906.200.2670

Obs./Med. = ESTRIADA

Similar =

Mtg. =

14

20-411

POLIA TENSORA CORREIA

Aplic. = SPRINTER 415/ 515 (2012...)



Cod.Orig. = 651.200.0670 / 000.202.1319

Obs./Med. = ESTRIADA (PLASTICO)

Similar = INA (F-566749)

Mtg. =

15

20-412

POLIA TENSORA CORREIA

Aplic. = SPRINTER 415/ 515 (2014...) ACCELO 715C/ OM612LA



Cod.Orig. = 651.200.0770 / 000.202.0419

Obs./Med. = LISA (PLASTICO) (PEQUENA)

Similar = INA (F-566748) / NYTRON (7740) / RANALLE (R4821)

Mtg. =

16

20-426

POLIA TENSORA CORREIA

Aplic. = SPRINTER 415/ 515 (2014...)



Cod.Orig. = 651.200.0270 / 651.200.0370

Obs./Med. = LISA PLASTICO (GRANDE)

Similar = INA (F-554184)

Mtg. =

02

55-017

POLIA DESVIADORA CORREIA

Aplic. = LS1938/ 1938S



Cod.Orig. = 000.550.0833 / 000.550.0433 / 000.550.1633 / 000.550.2533

Obs./Med. = LISA (FERRO ORIGINAL)

Similar =

Mtg. =

03

55-018

POLIA DESVIADORA CORREIA

Aplic. = LS1938/ 1938S



Cod.Orig. = 000.550.0833 / 000.550.0433

Obs./Med. = LISA (PLASTICO)

Similar = NYTRON (1219)

Mtg. =

04

55-022

POLIA DESVIADORA CORREIA

Aplic. = LS1938/ 1938S



Cod.Orig. = 000.550.0633

Obs./Med. = ESTRIADA

Similar = NYTRON (1224) / ROLT DO BRASIL (1343)

Mtg. =

05

20-185

POLIA TENSORA CORREIA

Aplic. = SPRINTER CDI/ ACCELO 715C



Cod.Orig. = 000.202.0019 / 000.202.0919

Obs./Med. = ESTRIADA (PLASTICO)

Similar = NYTRON (1228) / SKF (VKM4922)

Mtg. =

06

20-243

POLIA TENSORA CORREIA

Aplic. = ATEGO/ AXOR 1933/ LS1938/ 1938S/ LS1944/ 1944S (OM457)



Cod.Orig. = 000.550.1933

Obs./Med. = LISA FERRO

Similar =

Mtg. =

07

20-244

POLIA TENSORA CORREIA

Aplic. = AXOR



Cod.Orig. = 457.200.3070

Obs./Med. = ESTRIADA

Similar =

Mtg. = TENSOR (20-061)

08

20-245

POLIA TENSORA CORREIA

Aplic. = AXOR



Cod.Orig. = 457.200.3170 / 457.200.1470 / 457.200.2970 / 457.200.4370

Obs./Med. = LISA

Similar =

Mtg. = TENSOR (20-063)

REFERÊNCIA



PRODUTOS EM ORDEM

MERCEDES



09 20-116 TENSOR CORREIA ALTERNADOR



Aplic. = 1215C/ 1318/ 1718/ 1718M/ 1728S/ 1938S/ 1944S/ 2423B/ 2423K/ 2428/ 712/ 814C/ 915E/ ACCELO 915C/ ATRON 1319/ 1624/ 2324/ AXOR 2826/ 2831/ L1218/ L1418/ L1620/ L1622/ L2838/ LO914/ LO915/ LS1938/ LS263

Cod.Orig. = 906.200.2070 / 906.200.0270 / 906.200.1470 / 906.200.2270

Obs./Med. = POLIA LISA FERRO MOTOR OM904 OM906 OM924 OM926 OM457
Similar = GATES (38559) / DAYCO (DYV1055)

Mtg. = POLIA (20-246)

10 20-117 TENSOR CORREIA ALTERNADOR



Aplic. = SPRINTER 310/ 312

Cod.Orig. = 000.200.0670

Obs./Med. = MOTOR MAXION
Similar = NYTRON (7832)

Mtg. =

11 20-129 TENSOR CORREIA ALTERNADOR



Aplic. = O500/ AXOR 2035/ 2040/ 2044/ 2535

Cod.Orig. = 457.200.3270 / 457.200.3870 / 457.200.4770 / 457.200.0370

Obs./Med. = POLIA LISA (MOTOR OM457LA) COM 2 PINOS
Similar = GATES (38657) / NYTRON (7864) / DAYCO (DYV7864)

Mtg. = POLIA (20-274)

12 20-132 TENSOR CORREIA ALTERNADOR



Aplic. = O500/ 1718/ 1725/ 2318/ 2325/ ACCELO 915C/ OM904 ATEGO 1315/ 1418/ 1419/ 1518/ 1718/ 1719/ 1725/ 1725A/ 1728S/ 1729/ 2425/ 2428/ 2429/ ATRON 1319/ 1624/ 2324/ 2729/ AXOR 1933/ 2533/ 2826/ 2831/ OM906

Cod.Orig. = 906.200.4570 / 906.200.6770 / 906.200.3770 / 906.200.5970

Obs./Med. = POLIA LISA FERRO
Similar = GATES (T38640) / NYTRON (7863) / SKF (VKM4798)

Mtg. =

13 20-186 TENSOR CORREIA ALTERNADOR



Aplic. = SPRINTER CDI 2.2/ (OM611LA) ACCELO 715C (OM612LA)

Cod.Orig. = 611.200.0570 / 646.200.0270 / 611.200.0270 / 611.200.0470

Obs./Med. = POLIA LISA
Similar = NYTRON (7865)

Mtg. =

14 20-187 TENSOR CORREIA ALTERNADOR



Aplic. = ACTROS 2546LS/ 2646/ 4844K/ 1831/ 1835/ 1843/ 1848/ 2031/ 2035/ 2040/ 2555/ OM501LA

Cod.Orig. = 541.200.2570 / 541.200.2470 / 541.200.1170 / 541.200.1870

Obs./Med. = POLIA LISA (MOTOR OM501LA)
Similar = VETOR (VT8246)

Mtg. =

15 20-286 TENSOR CORREIA ALTERNADOR



Aplic. = ATEGO 1315/ 1418/ 1518/ 1718/ 1719/ 1725/ 1726/ 1728/ 1729/ 2425/ 2426/ 2428/ 2429 AXOR 1933 (2004...)

Cod.Orig. = 906.200.2670

Obs./Med. = POLIA ESTRIADA (MOTOR OM904/ OM904/ OM924/ OM926)
Similar =

Mtg. =

16 20-410 TENSOR CORREIA ALTERNADOR



Aplic. = SPRINTER 415/ 515 (2014...)

Cod.Orig. = 651.200.1870 / 651.200.0470

Obs./Med. = POLIA LISA PLASTICO (MOTOR OM651)
Similar =

Mtg. =

02 20-460 POLIA TENSORA CORREIA



Aplic. = 712C/ 1938/ 2638/ 1944S/ OM904/ OM457

Cod.Orig. = 457.200.1770P / 457.200.2570P / 572.000.070P

Obs./Med. = LISA (MOTOR OM457LA)
Similar = SKF (VKM4932)

Mtg. = TENSOR (20-115)

03 20-523 POLIA TENSORA CORREIA



Aplic. = SPRINTER 2.5 (1997A2000)

Cod.Orig. = 000.200.0970

Obs./Med. =

Similar =

Mtg. = TENSOR (20-450)

04 20-524 POLIA TENSORA CORREIA



Aplic. = ATEGO/ AXOR 1933/ LS1938/ 1938S/ LS1944/ 1944S (OM457)

Cod.Orig. = 000.550.1933

Obs./Med. = LISA NYLON

Similar =

Mtg. = TENSOR (20-211) (20-158)

05 20-061 TENSOR CORREIA ALTERNADOR



Aplic. = AXOR 2035/ 2045/ 3340/ 4140/ 4144

Cod.Orig. = 457.200.1970 / 457.200.3070 / 457.200.4470

Obs./Med. = POLIA ESTRIADA (FERRO) (MOTOR 457LA)
Similar = NYTRON (7866)

Mtg. = POLIA (20-244)

06 20-063 TENSOR CORREIA ALTERNADOR



Aplic. = AXOR/ 2035/ 2540/ 2640/ 2644/ 2036/ 2041/ 2040/3340/ 4140/ 4144

Cod.Orig. = 457.200.2970 / 457.200.3170 / 457.200.1470 / 457.200.4570

Obs./Med. = POLIA LISA (MOTOR OM457LA)
Similar =

Mtg. = POLIA (20-245)

07 20-110 TENSOR CORREIA ALTERNADOR



Aplic. = SPRINTER 310/ 312

Cod.Orig. = 000.030.0069 / 000.052.0103 / 006.990.4704

Obs./Med. = POLIA LISA (MOTOR DIESEL MAXION 2.5 HSD)
Similar = DAYCO (DYT270) / CONTINENTAL (V58615) / SKF (VKM4788) / INA (F1405641)

Mtg. =

08 20-115 TENSOR CORREIA ALTERNADOR



Aplic. = LS1938/ 1938S AXOR

Cod.Orig. = 457.200.1770 / 457.200.3470 / 457.200.0070

Obs./Med. = POLIA LISA (MOTOR MBB OM904 OM457)
Similar = DAYCO (APV1095) / NYTRON (7834) / SKF (VKM4783) / GATES (38570)

Mtg. = POLIA (20-460)

REFERÊNCIA



PRODUTOS EM ORDEM

MERCEDES



REFERÊNCIA



PRODUTOS EM ORDEM

PEUGEOT



02 20-455 TENSOR CORREIA ALTERNADOR



Aplc. = ACTROS 2546

Cod.Orig. = 541.200.1570 / 541.200.0870

LACTO: 10/2017

Obs/Med. = POLIA FERRO (MOTOR OM501LA)
Similar = DAYCO (APV1097) / GATES (T38601)
Mtg. =

10 15-050 POLIA ALTERNADOR



Aplc. = BOXER (2006/...)

Cod.Orig. = 574087

Obs/Med. = FERRO ESTRIADA
Similar = SKF (VKM03203) / VETOR (VT8518)
Mtg. =

03 20-456 TENSOR CORREIA ALTERNADOR



Aplc. = ATEGO 1315/ 1418/ 1419/ 1518/ 1718/ 1719/ 1725/ 1726/ 1728/ 1729/ 2425/ 2426/ 2428/ 2429/ ATRON 1319/ 1624/ 2324/ AXOR 1933

Cod.Orig. = 906.200.1270 / 906.200.4670 / 906.200.0370

LACTO: 10/2017

Obs/Med. = POLIA FERRO (MOTOR OM904 OM924 OM906 OM926)
Similar = DAYCO (APV1102) / INA (534009310) / NYTRON (7856)
Mtg. =

11 20-415 POLIA TENSORA CORREIA



Aplc. = BOXER 2.5 (1995 A 1998) BOXER 2.8 TURBO DIESEL (1999 A 2009)

Cod.Orig. = 081824 / 083040

Obs/Med. = CORREIA DENTADA
Similar = DAYCO (DYT251) / NYTRON (7752)
Mtg. =

REFERÊNCIA



PRODUTOS EM ORDEM

MITSUBISHI



12 20-416 POLIA TENSORA CORREIA



Aplc. = BOXER 2.5 (1995 A 1998)

Cod.Orig. = 0830.32 / 504104988

Obs/Med. =
Similar = DAYCO (247) / NYTRON (7751)
Mtg. =

05 20-421 TENSOR CORREIA ALTERNADOR



Aplc. = L200 2.5 TURBO DIESEL (1990...) L300 2.5 DIESEL (1995 A 2000) PAJERO 2.5 DIESEL (2006...)

Cod.Orig. = 2335742030

Obs/Med. = CORREIA DENTADA
Similar = NYTRON (7757)
Mtg. =

13 20-463 POLIA TENSORA CORREIA



Aplc. = BOXER 2.8 HDI / TURBO (2005/2009)

Cod.Orig. = 504106751 / 500346226

Obs/Med. = POLIA LISA FERRO
Similar = DAYCO (APV1040) / GATES (T36401)
Mtg. =

REFERÊNCIA



PRODUTOS EM ORDEM

NISSAN



14 20-464 POLIA TENSORA CORREIA



Aplc. = BOXER MULTJET 2.3 (2009...)

Cod.Orig. = 575113

Obs/Med. = PLASTICO LISA
Similar = DAYCO (APV1074) (DYV1074) / NYTRON (1255) / GATES (T36396) / INA (532029810)
Mtg. =

07 20-417 POLIA TENSORA CORREIA



Aplc. = FRONTIER/ X-TERRA MWM 2.8 TURBO (2002...)

Cod.Orig. = 117506S300

Obs/Med. = FERRO
Similar = NYTRON (1128)
Mtg. = TENSOR (20-296)

15 20-459 TENSOR CORREIA ALTERNADOR



Aplc. = BOXER 2.3 HDI (2010...)

Cod.Orig. = 504086751

Obs/Med. = POLIA PLASTICO
Similar = DAYCO (APV1075) / NYTRON (7839)
Mtg. =

08 20-296 TENSOR CORREIA ALTERNADOR



Aplc. = FRONTIER/ X-TERRA 2,8TURBO (2002...)

Cod.Orig. = 117506S300 / 119256S310

Obs/Med. = POLIA LISA CHAPA (MOTOR SPRINT 2.8)
Similar = NYTRON (7819) / MWM (94070380024) (940703410074) / CONTINENTAL (V58624) / DAYCO (Mtg. =

REFERÊNCIA



RENAULT

PRODUTOS EM ORDEM

RENAULT



REFERÊNCIA



RENAULT

PRODUTOS EM ORDEM

RENAULT



09

20-172

POLIA TENSORA CORREIA

Aplic. = SERIE 4/ SERIE 5



Cod.Orig. = 1858885 / 1512750 / 1510697

Obs/Med. = LISA
Similar = NYTRON (1284)
Mtg. =

02

20-415

POLIA TENSORA CORREIA

Aplic. = MASTER 2.8 TURBO DIESEL (2002...)



Cod.Orig. = 7.701.040.204

Obs/Med. = CORREIA DENTADA
Similar = DAYCO (DYT251) / NYTRON (7752)
Mtg. =

10

20-238

POLIA TENSORA CORREIA

Aplic. = SERIE 4



Cod.Orig. = 1514087 / 1428941

Obs/Med. = ESTRIADA
Similar = NYTRON (1243)
Mtg. =

REFERÊNCIA



SCANIA

PRODUTOS EM ORDEM

SCANIA



11

20-406

POLIA TENSORA CORREIA

Aplic. = SERIE 5 (2012...)



Cod.Orig. = 1860733 / 2129404

Obs/Med. =
Similar =
Mtg. =

04

20-529

POLIA TENSOR CORREIA

Aplic. = ONIBUS K124



Cod.Orig. = 1859657 / 1512181 / 1774654

LACTO: 11/2019

Obs/Med. = LISA PLASTICO
Similar = NYTRON (1289)
Mtg. = TENSOR (20-144) (20-145)

12

20-407

POLIA TENSORA CORREIA

Aplic. = SERIE 5 (2012...)



Cod.Orig. = 1860734 / 2129402 / 2089431

Obs/Med. = PLASTICO
Similar =
Mtg. = TENSOR (20-404)

05

20-530

POLIA TENSOR CORREIA

Aplic. = SERIE 5 (2012...)



Cod.Orig. = 1734904 / 1870553 / 1779757 / 2197391

LACTO: 11/2019

Obs/Med. = LISA PLASTICO
Similar =
Mtg. = TENSOR (20-404)

13

20-470

POLIA TENSORA CORREIA

Aplic. = SERIE 4



Cod.Orig. = 1761057

Obs/Med. =
Similar = DAYCO (APV2396) / GATES (T36527)
Mtg. =

LACTO: 05/2018

06

20-531

POLIA TENSOR CORREIA

Aplic. = SERIE 5 (2012...)



Cod.Orig. = 1734904 / 1870553 / 1779757 / 2197391

LACTO: 11/2019

Obs/Med. = LISA FERRO
Similar =
Mtg. =

14

20-522

POLIA TENSORA CORREIA

Aplic. = SERIE 4 R164 480/ R500/ R580



Cod.Orig. = 1503115 / 1859656

Obs/Med. = ESTRIADO PLASTICO
Similar =
Mtg. = TENSOR (20-252) (20-465)

LACTO: 12/2018

07

20-170

POLIA TENSORA CORREIA

Aplic. = SERIE 4 K124/ P124/ R114/ R124/ T114/ T124



Cod.Orig. = 1514086 / 1428940 / 5340617

Obs/Med. = LISA PLASTICO (COM AR CONDICIONADO)
Similar = INA (5320198100) / NYTRON (1242)
Mtg. =

15

20-525

POLIA TENSORA CORREIA

Aplic. = SERIE 4/ P94/ P114/ P124/ T114/ T124/ R124/ R114/



Cod.Orig. =

LACTO: 12/2018

Obs/Med. = LISA NYLON
Similar =
Mtg. = TENSOR (20-143)

08

20-171

POLIA TENSORA CORREIA

Aplic. = SERIE 4/ SERIE 5



Cod.Orig. = 1858884 / 1795774

Obs/Med. = ESTRIADA (PLASTICO)
Similar = NYTRON (1286)
Mtg. =

16

20-538

POLIA TENSORA CORREIA

Aplic. = SERIE 5 (2012...)



Cod.Orig. = 2129402 / 2089431 / 1860734

LACTO: 09/2020

Obs/Med. = FERRO (TIPO ORIGINAL)
Similar =
Mtg. = TENSOR (20-404)

REFERÊNCIA



PRODUTOS EM ORDEM

SCANIA



09

20-465

TENSOR CORREIA ALTERNADOR



Aplic. = G420/ G440/ G470/ P230/ P270/ P310/ P340/ P420/ R380/ R420/ R440/ R470/ SERIE 4/ SERIE 5/ (2008/...)

LACTO: 10/2017

Cod.Orig. = 2197001 / 1791073 / 1859653 / 1753497

Obs./Med. = POLIA PLASTICO ESTRIADA

Similar = DAYCO (APV2381)

Mtg. = POLIA (20-522)

10

20-467

TENSOR CORREIA ALTERNADOR



Aplic. = SERIE 5/ G 480

LACTO: 06/2018

Cod.Orig. = 2334403 / 2191989 / 1779750 / 1870551

Obs./Med. = POLIA ESTRIADA

Similar = DAYCO (APV2733) / GATES (T38700) / SKF (VKMCV556014)

Mtg. =

02

20-143

TENSOR CORREIA ALTERNADOR



Aplic. = SERIE 4/ P94/ P114/ P124/ T114/ T124/ R124/ R114/

Cod.Orig. = 1371788 / 2197002 / 1493670 / 1859654

Obs./Med. = POLIA PLASTICO LISA

Similar = DAYCO (89410) / GATES (38508) / SKF (VKM4782) / NYTRON (NY7833) / INA (531 051 1200)

Mtg. =

03

20-144

TENSOR CORREIA ALTERNADOR



Aplic. = ONIBUS K124

Cod.Orig. = 1859657 / 1512181 / 1774654

Obs./Med. =

Similar =

Mtg. = POLIA (20-529)

04

20-145

TENSOR CORREIA ALTERNADOR



Aplic. = SERIE 5 P,G,R

Cod.Orig. = 1859657 / 1774654 / 2197005 / 2197002

Obs./Med. = POLIA PLASTICO

Similar = NYTRON (7833)

Mtg. = POLIA (20-529)

05

20-252

TENSOR CORREIA ALTERNADOR



Aplic. = SERIE 4 R164 480/ R500/ R580

Cod.Orig. = 1503115 / 1545984 / 1774653 / 1859656

Obs./Med. = S/AR CONDICIONADO (MOTOR DC16.02CO DC16.04 DC16.03)

Similar =

Mtg. = POLIA (20-522)

06

20-253

TENSOR CORREIA ALTERNADOR



Aplic. = SERIE 4

Cod.Orig. = 1503114 / 1545983 / 1476395 / 1859655

Obs./Med. = C/AR CONDICIONADO

Similar =

Mtg. =

07

20-343

TENSOR CORREIA ALTERNADOR



Aplic. = SERIE 4/ P94/ P114/ P124/ T114/ T124/ R124/ R114/

LACTO: 08/2018

Cod.Orig. = 1371788 / 2197002 / 1493670 / 1503113

Obs./Med. = POLIA FERRO LISA

Similar =

Mtg. =

08

20-404

TENSOR CORREIA ALTERNADOR



Aplic. = SERIE 5 (2012...)

Cod.Orig. = 2197391 / 1870553 / 1779757 / 2192038

Obs./Med. = POLIA LISA FERRO

Similar =

Mtg. = POLIA (20-530) (20-531)

REFERÊNCIA



TOYOTA



PRODUTOS EM ORDEM

12

20-285

POLIA TENSORA CORREIA



Aplic. = HILUX 2.5/ 3.0 (2005...) SW4 3.0 (2006...)

Cod.Orig. = 166200L020 / 1662030031 / 135050I010 / 1350567041

Obs./Med. = LISA

Similar = NYTRON (2063) / RANALLE (R4743) / SKF (VKM4942) / ROLTENS (RT6412)

Mtg. =

13

20-284

TENSOR CORREIA ALTERNADOR



Aplic. = HILUX 2,5/ 3,0TD (2005...)

Cod.Orig. = 13505-67040 / 13505.6041 / 135050I010

Obs./Med. = POLIA LISA

Similar =

Mtg. =

REFERÊNCIA



TROLLER



PRODUTOS EM ORDEM

15

20-417

POLIA TENSORA CORREIA



Aplic. = T4/ T5 2.8 TURBO (2001 A 2005)

Cod.Orig. = 940703410074

Obs./Med. = FERRO

Similar = NYTRON (1128)

Mtg. = TENSOR (20-296)

16

20-296

TENSOR CORREIA ALTERNADOR



Aplic. = T4/ T5 (2001 A 2005)

Cod.Orig. = 940703410074 / 940703800024 / MSB34102

Obs./Med. = POLIA LISA CHAPA (MOTOR SPRINT 2.8)

Similar = NYTRON (7819) / MWM (940703800024) (940703410074) / CONTINENTAL (V58624) / DAYCO (

Mtg. =

REFERÊNCIA



PRODUTOS EM ORDEM

VOLKSWAGEN



09

20-313

POLIA TENSORA CORREIA



Aplic. = ONIBUS 17260EOT MOTOR TRASEIRO MWM X12 6CIL EURO 3 (2004...)

Cod.Orig. = 2Z0 903 165 K

Obs./Med. = ESTRIADA (CAMBIO AUTOMATICO 5/6 MARCHAS TIP TRONIC)

Similar = MWM (961203810026)

Mtg. =

10

20-314

POLIA TENSORA CORREIA



Aplic. = 13170E/ 15170E/ 13180E/ 15180E/ 15190E/ 15180EOD/ 15190EOD/ 17210EOD/ 17260EOT/ 8150EOD/ 9150EOD/ 5140/ 8150/ 5140EOD/ 8150EOD/ 26260E/ 31260E (2004...)

Cod.Orig. = 2R0 903 119 C / 2P0 903 119

Obs./Med. = ESTRIADA (MOTOR MWM X12 4 E 6 CIL EURO 3)

Similar = NYTRON (7806) / ROLT DO BRASIL (2309)

Mtg. = TENSOR (20-256)

11

20-316

POLIA TENSORA CORREIA



Aplic. = ONIBUS 17240 OT (2001/2007)

Cod.Orig. = 2TB 903 159

Obs./Med. = ESTRIADA (MOTOR MWM X10 6CIL)

Similar = MWM (961003810126)

Mtg. =

12

20-317

POLIA TENSORA CORREIA



Aplic. = 14220/ 16220/ 24220/ 24250/ 35300/ 16300/ 16170BT/ 14170BT/ 16200/ 40300/ 13170/ 15170/ 17210/ 17300/ 17220/ 26300/ 40300/ 24220/ 24250/ 12170BT

Cod.Orig. = 2S0 145 299 B

Obs./Med. = ESTRIADA

Similar = SKF (VKM4933)

Mtg. = TENSOR (20-148)

13

20-318

POLIA TENSORA CORREIA



Aplic. = 17220/ 17310/ 23310/ 26220/ 26260/ 23220/ 31260/ 26310/ 31310/ 24220/ (COM AR CONDICIONADO) 18310 TITAN

Cod.Orig. = 2T0 145 299 B

Obs./Med. = MOTOR CUMMINS (LISA FERRO)

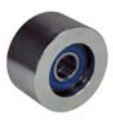
Similar =

Mtg. = TENSOR (20-150)

14

20-327

POLIA TENSORA CORREIA



Aplic. = 18310OT/ 18320EOT CONSTELLATION 19320E/ 25320/ 31320E/ 17320E/ 24320E/ 19330/ 19390/ 25390/ 26390/ 19420/ 25420/ 26420

Cod.Orig. = 2Z0 903 119 A

Obs./Med. = LISA (MOTOR CUMMINS ISC ISL)

Similar = CUMMINS (3970737)

Mtg. = SUPORTE (20-512)

15

20-342

POLIA TENSORA CORREIA



Aplic. = 13190/ 15190/ 17190/ 17230/ 17280/ 17280OT/ 18280OT/ 24280/ 26280/ TGX 28440/ 29440/ 29480/ 33440

Cod.Orig. = 2V5145299

LACTO: 07/2018

Obs./Med. = LISA

Similar =

Mtg. = TENSOR (20-443)

16

20-414

POLIA TENSORA CORREIA



Aplic. = 8.150E/ 9.150E/ 13.170E/ 15.170E/ 17.250E/ 24.250E/ CONSTELLATION (MOTOR ISB)

Cod.Orig. = 2R0 145 299 P

Obs./Med. = LISA FERRO

Similar = NYTRON (1314)

Mtg. = TENSOR (20-149)

02

20-275

POLIA TENSORA CORREIA



Aplic. = 8.150E/ 9.150E/ 13.170E/ 13.180E/ 15.170E/ 15.190E MOTOR CUMMINS

Cod.Orig. =

Obs./Med. = SUPERIOR

Similar = DAYCO (APV-1085) / SKF (VKMCV52007) / INA (532.0290.10) (532.0577.10)

Mtg. =

03

20-277

POLIA TENSORA CORREIA



Aplic. = 8150E/ 9150E/ 17250E/ 23250E/ 24250E/ 13170E/ 15170E/ 8150EOD/ 15190E (2005...)

Cod.Orig. = 2R0 903 119 B

Obs./Med. = LISA (MOTOR CUMMINS ISB 5.9 ISB 3.9)

Similar = CUMMINS (4897031)

Mtg. =

04

20-292

POLIA TENSORA CORREIA



Aplic. = 8.150E/ 9.150E/ 13.170E/ 13.180E/ 15.170E/ 15.180E/ 15.190E/ 17.250E/ 23.250E/ 24.250E/ MICRO 8.150EOD/ 9.150EOD (2005...)

Cod.Orig. = 2T0 903 165 / 2T0 903 119

Obs./Med. = ESTRIADA (MOTOR CUMMINS ISB 4 E 6 CIL)

Similar = CUMMINS (3971876)

Mtg. = SUPORTE (20-448) / TENSOR (20-447)

05

20-309

POLIA TENSORA CORREIA



Aplic. = CONSTELLATION 19.370E/ 25.370E/ ONIBUS 17.240/ 17.260/ 18330/ MOTOR TRAS.

Cod.Orig. = 2Z0 903 165 F

Obs./Med. = ESTRIADA (8PK)

Similar =

Mtg. =

06

20-310

POLIA TENSORA CORREIA



Aplic. = ONIBUS 18.310 OT/ 18320E OT

Cod.Orig. = 2Z0 903 165

Obs./Med. = ESTRIADA (MOTOR CUMMINS)

Similar =

Mtg. =

07

20-311

POLIA TENSORA CORREIA



Aplic. = 13170E/ 15170E/ 8150EOD/ 9150EOD/ 5140/ 9150/ 26260/ 13180E/ 15180E/ 26260E/ 31260E/ 17240OT/ 17260EOT (MOTOR MWM X10)

Cod.Orig. = 2R0 903 119 D / 2Z0 145 285

Obs./Med. = LISA (TIPO ORIGINAL)

Similar = INA (F-110849)

Mtg. =

08

20-312

POLIA TENSORA CORREIA



Aplic. = ONIBUS 17260EOT/ 18320EOT/ 17310OT/ 18330OT (2004...)

Cod.Orig. = 2Z0 903 165 D

Obs./Med. = ESTRIADA (10PK) MOTORES MWM 6.12 CUMMINS 6CT ISC ISL

Similar =

Mtg. =

REFERÊNCIA



PRODUTOS EM ORDEM

VOLKSWAGEN



09 20-169 TENSOR CORREIA ALTERNADOR



Aplic. = 11.130/ 13.130

Cod.Orig. = T12 145 275

Obs./Med. = MOTOR MWM 229 6CIL (POLIA 1 PISTA FERRO EM V 97,50 MM)
Similar = NYTRON (7728)

Mtg. =

10 20-251 TENSOR CORREIA ALTERNADOR



Aplic. = CONSTELLATION 17.320/ 19.320E/ 24.320/ 25.320/
31.320 C/MOTOR CUMMINS ISC 83/ 19.330/ 25.330/
25.390/ 25.420 C/MOTOR CUMMINS ISL

Cod.Orig. = 2T2 145 299 A / 2Z0 145 299 B / 2T2 145 299 C

Obs./Med. = POLIA ESTRIADA (FERRO) MICRO V
Similar = CUMMINS (5259022) (3976831) / GATES (89406) / DAYCO (89406)

Mtg. =

11 20-256 TENSOR CORREIA ALTERNADOR



Aplic. = CONSTELLATION 13.150/ 15.180/ 22.160/ 26260/
31260/ ONIBUS 15.180/ 15.190/ MICRO 8.150E/
9.150E

Cod.Orig. = 2R0 903 133

Obs./Med. = POLIA ESTRIADA (C/MOTOR 4 E 6 CIL MWM X-12)
Similar = MWM (961203410046) / NYTRON (1242CS)

Mtg. = POLIA (20-314)

12 20-293 TENSOR CORREIA ALTERNADOR



Aplic. = 6.90/ 7.90/ 7.110/ 11.130/ 13.130/ 14.140

Cod.Orig. = T11 145 275 A

Obs./Med. = POLIA EM V (85 MM) FERRO
Similar = MWM (922903410045)

Mtg. =

13 20-308 TENSOR CORREIA ALTERNADOR



Aplic. = ONIBUS 17.240/ 17.260EOT/ (MOTOR TRAS)

Cod.Orig. = 2TB 903 150

Obs./Med. = POLIA LISA (MOTOR MWM X12 CIL EURO 3)
Similar = MWM (961003410014)

Mtg. =

14 20-408 TENSOR CORREIA ALTERNADOR



Aplic. = ONIBUS 18.310/ 18.320EOT

Cod.Orig. = 2Z0 903 133

Obs./Med. = POLIA LISA (MOTOR CUMMINS 6CTAA 8.3 ISC 8.3)
Similar = CUMMINS (3358082)

Mtg. =

15 20-442 TENSOR CORREIA ALTERNADOR



Aplic. = 13190/ 15190/ 17190/ 24280/ 17280/ 26280/ 31280/
15190/ 17230/ 17280 ADVANTECH

Cod.Orig. = 07W 903 133

Obs./Med. = MOTOR MAN D08 4 CIL E 6 CIL EURO V
Similar =

Mtg. =

16 20-443 TENSOR CORREIA ALTERNADOR



Aplic. = MAN TGX 28.440/ 29.440/ 33.440/ 29.480 (2012...)

Cod.Orig. = 2V5 145 299

Obs./Med. = MOTOR D2066 13 LITROS

Similar =

Mtg. =

02 20-425 POLIA TENSORA CORREIA



Aplic. = 8.150E/ 9.150E/ 13.170E/ 15.170E/ 17.250E/ 24.250E/
CONSTELLATION (MOTOR ISB)

Cod.Orig. = 2R0 145 299 P

Obs./Med. = POLIA LISA NYLON

Similar =

Mtg. = TENSOR (20-149)

03 20-535 POLIA TENSORA CORREIA



Aplic. = 13170E/ 15170E/ 8150EOD/ 9150EOD/ 5140/ 9150/
26260/ 13180E/ 15180E/ 26260E/ 31260E/ 17240OT/
17260EOT (MOTOR MWM X10)

Cod.Orig. = 2Z0 145 285 / 2R0 903 119D

Obs./Med. = LISA (PLASTICO)

Similar =

Mtg. =

04 20-448 SUPORTE TENSOR CORREIA



Aplic. = 8.150E/ 9.150E/ 13.170E/ 13.180E/ 15.170E/ 15.180E/
15.190E/ 17.250E/ 23.250E/ 24.250E/ MICRO
8.150EOD/ 9.150EOD (2005) MOTOR CUMMINS ISB 4
E 6 CIL

Cod.Orig. = 2R0 121 305 / 2R0 121 305 A

Obs./Med. = S/POLIA

Similar = CUMMINS (3358264) (5295048)

Mtg. = POLIA (20-292) / TENSOR (20-447)

05 20-148 TENSOR CORREIA ALTERNADOR



Aplic. = 14220/ 16220/ 24220/ 24250/ 35300/ 16300/
16170BT/ 14170BT/ 16200/ 40300/ 13170/ 15170/
17210/ 17300/ 17220/ 26300/ 40300/ 24220/ 24250/

Cod.Orig. = 2S0 145 299 B / TJG 145 275 / 2F0 145 299B / TJG 145 275 A

Obs./Med. = MOTOR CUMMINS 6CTAA 6BTAA (POLIA ESTRIADA)

Similar = DAYCO (89415) / GATES (38518) / CUMMINS (3936210) (3967190)

Mtg. = POLIA (20-317)

06 20-149 TENSOR CORREIA ALTERNADOR



Aplic. = 8150E/ 9150E/ 17250E/ 23250E/ 24250E/ 13170E/
15170E/ 8150EOD/ 9150EOD CONSTELLATION
17250E/ 24250E (2005...)

Cod.Orig. = 2R0 145 299

Obs./Med. = MOTOR CUMMINS ISB 4 E 6 CIL (POLIA LISA NYLON)

Similar = CUMMINS (4891116) (4898548)

Mtg. = POLIA (20-414)

07 20-150 TENSOR CORREIA ALTERNADOR



Aplic. = 17220/ 17310/ 23310/ 26220/ 26260/ 23220/ 31260/
26310/ 31310/ 24220/ (COM AR CONDICIONADO)
18310/ TITAN

Cod.Orig. = 2T0 145 299 B

Obs./Med. = MOTOR CUMMINS (POLIA LISA FERRO)

Similar = DAYCO (89409) / GATES (38504) / CUMMINS (3967188) (3937553) / VANNUCCI (VA10150)

Mtg. = POLIA (20-318)

08 20-168 TENSOR CORREIA ALTERNADOR



Aplic. = 7.100/ 8.140/ 12.140T/ 13.180/ 15.180/ 13.180/
15.180/ 17.210

Cod.Orig. = 2RP 903 157 / 2RD 903 139

Obs./Med. = MOTOR MWM X-10 (POLIA FERRO) MICRO V

Similar = DAYCO (DYV723) / MWM (941003410016)

Mtg. =

REFERÊNCIA



PRODUTOS EM ORDEM

VOLKSWAGEN



09

20-311

POLIA TENSORA CORREIA

Aplic. = VM17/ VM23



Cod.Orig. = 20504062

Obs./Med. = LISA (TIPO ORIGINAL)
Similar = INA (F-110849)
Mtg. =

02

20-445

TENSOR CORREIA ALTERNADOR

Aplic. = 10160/ 9160/ 91600D (2010...)



Cod.Orig. = 2P0 145 299 A / 2P0 145 299

LACTO: 08/2017

Obs./Med. = POLIA LISA (MOTOR CUMMINS ISF 4CIL EURO V)
Similar = CUMMINS (5333486)
Mtg. =

10

20-320

POLIA TENSORA CORREIA

Aplic. = VM210/ VM240/ VM260/ VM310/ B9L/ B9S/ B9TL/ B7R/ B12B/ B12M



Cod.Orig. = 20700787 / 20924200

Obs./Med. = ESTRIADA
Similar =
Mtg. = TENSOR (20-254)

03

20-447

TENSOR CORREIA ALTERNADOR

Aplic. = 8.150E/ 9.150E/ 13.170E/ 13.180E/ 15.170E/ 15.180E/ 15.190E/ 17.250E/ 23.250E/ 24.250E/ MICRO 8.150EOD/ 9.150EOD MOTOR CUMMINS ISB 4 E 6CIL (2005...)



Cod.Orig. = 2S0 121 305

LACTO: 05/2018

Obs./Med. = SUPORTE C/POLIA ESTRIADA
Similar = CUMMINS (3358265)
Mtg. = POLIA (20-292) / SUPORTE (20-448)

11

20-518

POLIA TENSORA CORREIA

Aplic. = ONIBUS B12B/ B12M/ B11R/ B10B/ B9R/ B9S/ B7R/ B13R



Cod.Orig. = 20851842

LACTO: 06/2018

Obs./Med. = ESTRIADA (POLIA DO COMPRESSOR AR CONDICIONADO)
Similar =
Mtg. =

04

20-451

TENSOR CORREIA ALTERNADOR

Aplic. = 19370/ 25370/ 31370/ (2005/...)



Cod.Orig. = 2U2 145 299

LACTO: 10/2017

Obs./Med. = MOTOR MWM NGD INTERNACIONAL 370CV
Similar = MWM (1841760C1)
Mtg. =

12

20-524

POLIA TENSORA CORREIA

Aplic. = FH12 / N12/ FM12 (...2007)



Cod.Orig. = 3979981 / 2050393 / 50747516

LACTO: 12/2018

Obs./Med. = LISA NYLON
Similar =
Mtg. = TENSOR (20-211) (20-158)

REFERÊNCIA



PRODUTOS EM ORDEM

VOLVO



13

20-535

POLIA TENSORA CORREIA

Aplic. = VM17/ VM23



Cod.Orig. = 20504062

LACTO: 07/2020

Obs./Med. = LISA (PLASTICO)
Similar =
Mtg. =

06

20-526

POLIA TENSOR CORREIA

Aplic. = FH12 / NH12 (1994/1999)



Cod.Orig. = 8149798 / 3154315 / 1664973

LACTO: 11/2019

Obs./Med. = LISA FERRO
Similar =
Mtg. = TENSOR (20-294)

14

20-146

TENSOR CORREIA ALTERNADOR

Aplic. = ONIBUS B7R (2011...) B 5 LH/ B 6 R/ B 7 R



Cod.Orig. = 21500149 / 20939284 / 85013360

Obs./Med. =
Similar =
Mtg. =

07

20-528

POLIA TENSOR CORREIA

Aplic. = FH 12/ D13/ FM12 (2004...) FH13 (...2015)



Cod.Orig. = 21153968 / 20521447 / 21153968 / 21766717

LACTO: 11/2019

Obs./Med. = ESTRIADO FERRO
Similar =
Mtg. = TENSOR (20-248)

15

20-158

TENSOR CORREIA ALTERNADOR

Aplic. = FH12/ FH13 (D13) (2007...)



Cod.Orig. = 20487079 / 21479276 / 21260406 / 85013790

Obs./Med. = POLIA FERRO LISA (MOTOR 400,440,480,520 D13A)
Similar =
Mtg. =

08

20-243

POLIA TENSORA CORREIA

Aplic. = FH12 / N12/ FM12 (...2007)



Cod.Orig. = 3979981 / 20503093 / 50747516

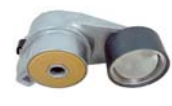
Obs./Med. = LISA FERRO
Similar =
Mtg. =

16

20-210

TENSOR CORREIA ALTERNADOR

Aplic. = FH12 380/ 420/ 460/ FH12/ NH12/ (99/05)



Cod.Orig. = 3979980 / 8149879 / 21257889

Obs./Med. = MOTOR D12
Similar = GATES (38547) / NYTRON (7851) / DAYCO (DYV1067)
Mtg. = POLIA (20-524) (20-243)

REFERÊNCIA



PRODUTOS EM ORDEM

VOLVO



09

20-466

TENSOR CORREIA ALTERNADOR

Aplic. = ONIBUS B9R/ B9S/ B9L



Cod.Orig. = 20827109 / 21576596

LACTO: 06/2018

Obs/Med. = POLIA FERRO LISA
Similar = DAYCO (APV2388) / SKF (VKMCV53012)
Mtg. =

02

20-211

TENSOR CORREIA ALTERNADOR

Aplic. = FH12 (...2007) FH13 (...2015) FM11/ FM13/ B11R/



Cod.Orig. = 3979979 / 20700787 / 21819687 / 21422765

Obs/Med. = DO ALTERNADOR (MOTOR D13A)
Similar = GATES (38607) / DAYCO (APV1151) / INA (534025910) / NYTRON (NY7851)
Mtg. = POLIA (20-243)

10

20-469

TENSOR CORREIA ALTERNADOR

Aplic. = N10/ NL10 340/ (1989/1995) ONIBUS B7R/ B12/ B12R



Cod.Orig. = 3092554 / 421540 / 3095413 / 3093090

LACTO: 10/2017

Obs/Med. = MOTOR TD102FS
Similar =
Mtg. =

03

20-212

TENSOR CORREIA ALTERNADOR

Aplic. = FM12/ NH12/ FN12/ FH12 (05/07)



Cod.Orig. = 8149855 / 20935523 / 20966526 / 21404578

Obs/Med. = MOTOR D12D
Similar = GATES (38585) / DAYCO (APV1117)
Mtg. = POLIA (20-524) (20-243)

11

20-471

TENSOR CORREIA ALTERNADOR

Aplic. = N10/ N12/ NL12



Cod.Orig. = 1660001

LACTO: 06/2018

Obs/Med. = POLIA ALUMINIO
Similar =
Mtg. =

04

20-248

TENSOR CORREIA ALTERNADOR

Aplic. = FH 12/ D13/ FM12 (2004...) FH13 (...2015)



Cod.Orig. = 21153968 / 20521447 / 21153968 / 21766717

Obs/Med. = POLIA INTERMEDIARIA ESTRIADA (MOTOR D13A)
Similar = DAYCO (APV2834) / SKF (VKMCV53010)
Mtg. =

05

20-254

TENSOR CORREIA ALTERNADOR

Aplic. = VM210/ VM240/ VM260/ VM310/ B9L/ B9S/ B9TL/ B7R/ B12B/ B12M



Cod.Orig. = 20515543 / 3979579 / 20924200 / 20700787

Obs/Med. = POLIA ESTRIADA
Similar =
Mtg. =

06

20-283

TENSOR CORREIA ALTERNADOR

Aplic. = ESCAVADEIRA



Cod.Orig. = 21411884

LACTO: 06/2018

Obs/Med. =
Similar =
Mtg. =

07

20-294

TENSOR CORREIA ALTERNADOR

Aplic. = FH12 / NH12 (1994/1999)



Cod.Orig. = 8149798 / 3154315 / 1664973

Obs/Med. = POLIA FERRO (MOTOR D12D D12C D12D)
Similar = GATES (38565) / DAYCO (APV2450) / NYTRON (7825) / INA (531 061 9300)
Mtg. = POLIA (20-526)

08

20-326

TENSOR CORREIA ALTERNADOR

Aplic. = FH13/ FM13/ B12B (2006...)



Cod.Orig. = 20491753 / 21145261 / 15187600 / 21155561

Obs/Med. = POLIA ESTRIADA (MOTOR D13)
Similar = GATES (38581) / DAYCO (APV1115) (DYV89456)
Mtg. =